

# Kilowatt Hour Meters

## DEMO15 - Single phase DIN-rail watt-hour meter

A new kind of single phase electronic watt-hour meter that uses micro-electronic techniques to accurately and directly measure 50Hz or 60Hz active energy consumption from a single phase AC electricity network. Displays energy consumption by step type impulse register.



### PRODUCT FEATURES:

- ▶ 35mm standard DIN rail installation, complying with standard DIN EN5002
- ▶ 18mm width, complying with standard DIN43880
- ▶ 5 + 1 digits display (99999.1 kWh)
- ▶ Analogue display for visibility in sunlight
- ▶ Impulse output
- ▶ Wire size: 6mm<sup>2</sup>

Code: DEMO15

### TECHNICAL PARAMETERS:

<b>Accuracy</b>	Class 1
<b>Rated Voltage</b>	230V
<b>Rated Current</b>	45A
<b>Starting Current</b>	0.4% Ib
<b>Insulation Performance</b>	AC voltage 2kV for 1 minute impulse voltage 6kV

## DEMO11 - Single phase electronic watt-hour meter

A new style of single phase electronic watt-hour meter that uses micro-electronics techniques to accurately and directly measure 50Hz or 60Hz active energy consumption from a single phase AC electricity network. Displays energy consumption by step type impulse register. Requires neutral to be part of load circuit.



### PRODUCT FEATURES:

- ▶ 35mm standard DIN rail installation, complying with standard DIN EN5002
- ▶ LCD display
- ▶ Impulse output
- ▶ 75mm wide
- ▶ Wire size: 25mm<sup>2</sup>

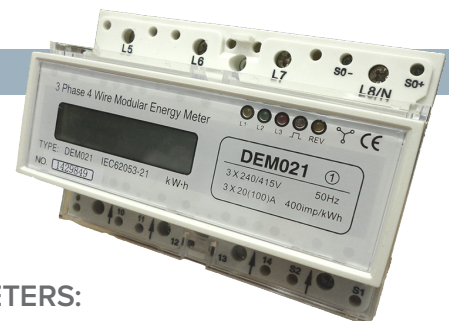
Code: DEMO11

### TECHNICAL PARAMETERS:

<b>Accuracy</b>	Class 1
<b>Rated Voltage</b>	230V
<b>Rated Current</b>	100A
<b>Starting Current</b>	0.4% Ib
<b>Insulation Performance</b>	AC voltage 2kV for 1 minute impulse voltage 6kV

## DEMO21 - Three phase electronic watt-hour meter

A new style of three phase electronic watt-hour meter that accurately and directly measures active energy consumption from three phase AC electricity network. Displays energy consumption by step type impulse register.



### PRODUCT FEATURES:

- ▶ 35mm standard DIN rail installation, complying with standard DIN EN5002
- ▶ LCD display
- ▶ Impulse output
- ▶ 125mm wide
- ▶ Wire size: 25mm<sup>2</sup>

Code: DEMO21

### TECHNICAL PARAMETERS:

<b>Accuracy</b>	Class 1
<b>Rated Voltage</b>	3x230V/400V
<b>Rated Current</b>	3 x 100A
<b>Starting Current</b>	0.4% Ib
<b>Insulation Performance</b>	AC voltage 2kV for 1 minute impulse voltage 6kV

Firstflex has taken every precaution to ensure accurate information in this catalogue, but accept no liability for any errors or omissions. Firstflex reserves the right to modify specifications at any time.