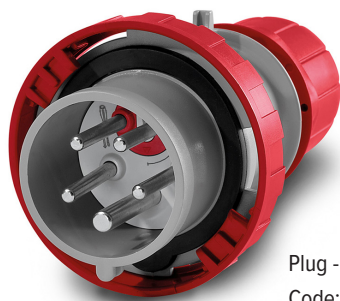


Plug with Phase Inverters

Optima Series Reverse

Have you ever tried to plug in a three-phase tool and discovered that the motor rotates in the wrong direction? So, you then have to take the plug apart, remove the wires from the terminals, invert two phases, put everything back together again...

Or you can use a “phase inverter” plug from Scame’s OPTIMA Series which will immediately solve your problem with one simple move!



Plug - IP67 Version
Code: **218.3237RV**

Plugs - IP66/67

Code	Rating	Pins
218.1636RV	16 Amp	3 P + E
218.3236RV	32 Amp	3 P + E
218.1637RV	16 Amp	3 P + N + E
218.3237RV	32 Amp	3 P + N + E



Flush Mounting - IP67
Code: **248.1696RV**

Flush Mounting Appliance Inlets - IP66/67

Code	Rating	Pins
248.1696RV	16 Amp	3 P + E
248.3296RV	32 Amp	3 P + E
248.1697RV	16 Amp	3 P + N + E
248.3297RV	32 Amp	3 P + N + E

SCAME
feeling connected

SCAME PHASE ROTATION CHANGER

16 Amp & 32 Amp Plugs & Inlets
with built in reversing switch



The phases are inverted by simply pushing and turning the phase pin support with a screwdriver.

