



HARDWARE

Catenary Products	232
Catenary Wire Accessories	233
Meter Boxes.....	234
PVC Switchboard Panels	235
Aluminium Extrusion DIN Rail	236
Extruded PVC Gasket.....	236
Flush Boxes.....	237
Terminal Strips	238
Earth Tags.....	238
Danger Signs	239
Danger Labels	239
Warning Tape.....	240



Catenary Products



Catwire PL/COV 2.6 X 5KG	
Code: CATWIR52 (Green) / CATWIR52W (White)	
Green	Outside diameter 2.6mm
Standard	JIS.G3532.SWM.G1
Core Size	2.03mm diameter
Coating	Rigid PVC
Wire	Iron wire
Breaking Load	123 - 162kg
Roll Size	Nominal - 5.0kg (190m)



Catwire PL/COV 3.2 X 5KG	
Code: CATWIR53 (Black) / CATWIR53RED (Red)	
Black or Red	Outside diameter 3.2mm
Standard	JIS.G3532.SWM.G1
Core Size	2.80mm diameter
Coating	Rigid PVC
Wire	Iron wire
Breaking Load	228 - 265kg
Roll Size	Nominal - 5.0kg (100m)



If you use catwire often, here's just what you need to make the work easier,
THE ELECTREX CATWIRE CAROUSEL!



Catwire Carousel	
Code: CATCAR	
Size	Approx. overall dimensions: 500mm x 500mm x 315mm
Load Capacity	Holds 5kg rolls of Electrex catenary wire
Colour/Coating	Red, Powdercoated

Firstflex has taken every precaution to ensure accurate information in this catalogue, but accept no liability for any errors or omissions. Firstflex reserves the right to modify specifications at any time.



Catenary Wire Accessories



Eye Bolt

Includes nut & washer.
1/4 inch x 100mm.
25 per bag.
Code: EYEBOL



Screwed Hole

6mm hole.
6mm x 70mm long.
100 per bag.
Code: SCRHOL



Coach Eye

6mm x 75mm.
Zinc plated.
50 per bag.
Code: COAEYE



Maxi Hook

4mm x 70mm long.
50 per bag.
Code: MHOOK



Mega Hook

6mm x 100mm long.
25 per bag.
Code: MH100



"S" Hook

4mm dia. x 35mm.
25 per bag.
Code: SHOOK



D Shackle

5mm.
Galvanised.
Code: DSHACK



Wire Grip/Clamp

3mm.
Code: GRIP3



Ratchet Tensioner

Code: H302



Hook and Eye Turnbuckle

M5: Range 100 - 150mm.
Code: TUR5
M6: Range 140 - 215mm.
Code: TUR6
M8: Range 160 - 235mm.
Code: TUR8
M10: Range 140 - 190mm.
Code: TUR10



Open Link Chain

Bright zinc plated.
Link: 32mm x 12mm wide
x 2.5mm diameter.
Max break load: 15kg.
25 metre bag.
Code: CHOL



Welded Link Chain

Bright zinc plated.
Link: 25mm x 11mm wide
x 3mm diameter.
Max break load: 37kg.
10 metre bag.
Code: CHWL



Bulk Welded Link Chain

Bright zinc plated.
Link: 25mm x 11mm
x 3mm diameter.
Max break load: 37kg
50kg drum - approx
300 metres.
Code: CHWLB

Firstflex has taken every precaution to ensure accurate information in this catalogue, but accept no liability for any errors or omissions. Firstflex reserves the right to modify specifications at any time.

Meter Boxes with Flashing

Manufactured locally, with materials that provide excellent mechanical, thermal and electrical properties. The rust proof construction is particularly suitable in New Zealand's highly corrosive coastal environments.

Meter Box - Double Window

- ▶ Size: 600mm high x 400mm wide x 210mm deep
- ▶ Flammability test UL 94 HB
- ▶ Surface or flush mountable
- ▶ Flashing kit included for weather tightness
- ▶ 15mm foamed PVC sheet backboard for front wiring and easy mounting of components
- ▶ IPX4

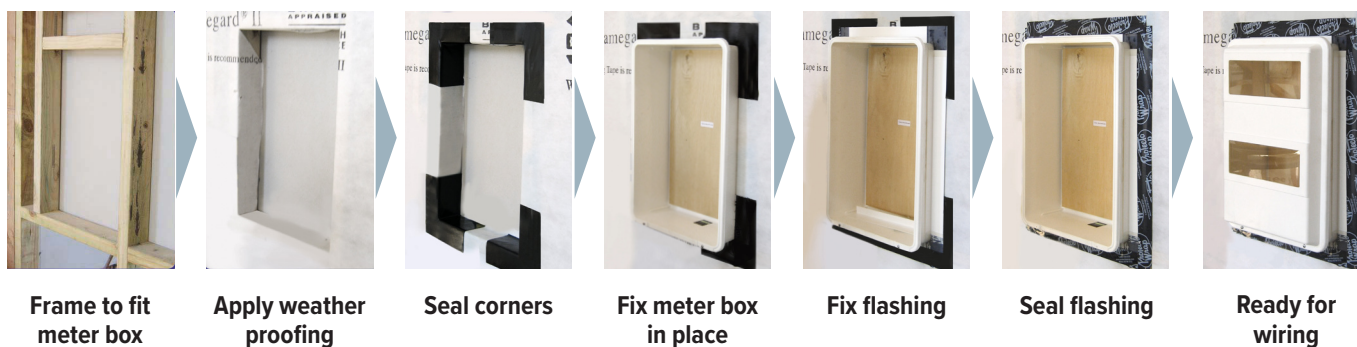
Code: MGB1



Meter Box - Single Window

- ▶ Size: 400mm x 400mm x 175mm
- ▶ Flammability test UL94 V0
- ▶ Surface or flush mountable
- ▶ Flashing kit included for weather tightness
- ▶ IPX4

Code: MGB2

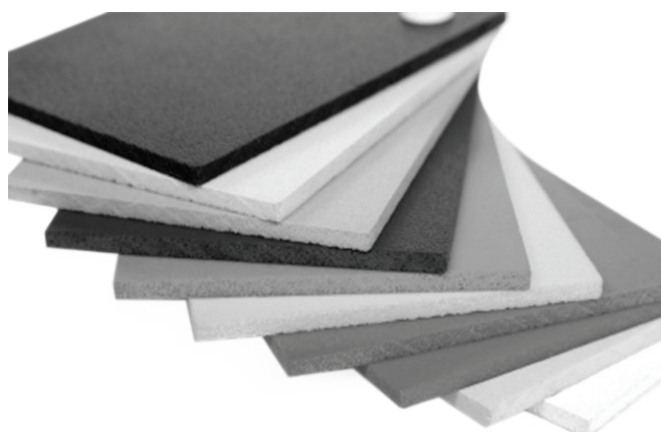




PVC Switchboard Panels

- ▶ All PVC panels are self extinguishing and made from flame retardant materials.
- ▶ Different thicknesses available, ranging from 2mm (clear & white only) 3mm, 4.5mm, 6mm and 10mm (grey or white) panels cut to size and available upon request.
- ▶ Formica panels available on request.

PVC Switchboard Panels		
Code	Description	
PP300 x 300	PVC	300mm x 300mm x 4.5mm
PP450 x 300	PVC	450mm x 300mm x 4.5mm
PP450 x 450	PVC	450mm x 450mm x 4.5mm
PP600 x 450	PVC	600mm x 450mm x 6mm
PP600 x 600	PVC	600mm x 600mm x 6mm
PP900 x 600	PVC	900mm x 600mm x 6mm
PP900 x 900	PVC	900mm x 900mm x 6mm
PPM1	PVC M1	555mm x 360mm x 4.5mm
PPM2	PVC M2	555mm x 555mm x 4.5mm



We can supply
SPECIAL
CUT-TO-SIZE
panels at your request.

And QUICKLY too!

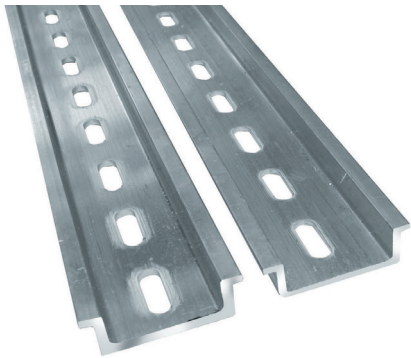
Whatever your
customer requirements, call us
for PVC Switchboard Panels.

Aluminium Extrusion
DIN Rail

Standard section includes slotted mounting holes.
Slotted mounting holes are -
5mm (W) x 15mm (L) @ 25mm centres.

EXTRUSION PROFILES

Standard - 10mm deep with 1.7mm wall thickness.
Heavy Duty - 10mm deep with 2mm wall for strength.



Aluminium Extrusion DIN Rail	
Code	Description
ALD1P	Standard, 1m, Punched
ALD2P	Standard, 2m, Punched
ALD3P	Standard, 3m, Punched
ALDP1HD	Heavy Duty, 1m, Punched
ALDP2HD	Heavy Duty, 2m, Punched
ALDP3HD	Heavy Duty, 3m, Punched

Extruded PVC Gasket



Extruded PVC Gasket			
Code	Size		
GASS (Small)	5mm H	2mm T	10m L
GASL (Large)	8mm H	3.5mm T	10m L

Metal Flush Boxes

In many structures it is often required that electrical and plumbing fittings be located in or on fire resistant walls. Metal flush boxes are fire rated and can be used for this requirement.

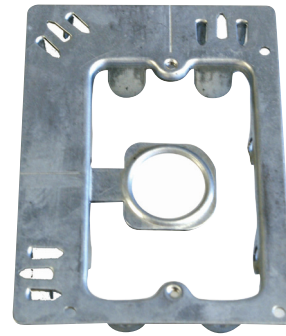


Single Metal Flush Box

Size: 97 x 54 x 51mm

Packed in cartons of 50

Code: FBMSA

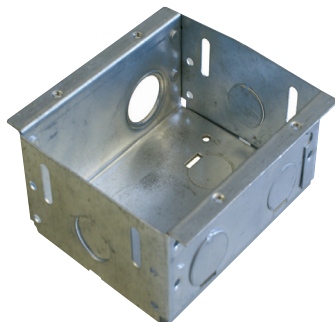


Open Plate Flush Box

Size: 119 x 87mm

Packed in cartons of 100

Code: FBMO



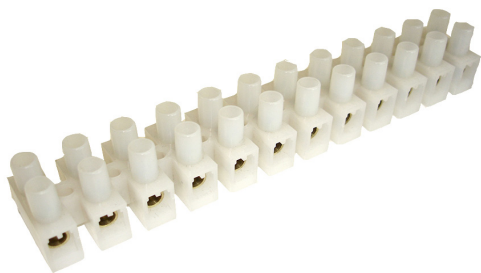
Double Metal Flush Box

Size: 97 x 75 x 47mm

Packed in cartons of 10

Code: FBMD

Terminal Strips



Code	Amps	Max Cable Size	Pack Size
815.1361	3 Amp	2.5mm	10 Pack
815.1362	6 Amp	4mm	10 Pack
815.1363	10 Amp	6mm	10 Pack
815.1364	20 Amp	10mm	10 Pack
815.1367	30 Amp	12mm	10 Pack
815.1365	80 Amp	16mm	10 Pack
815.1366	100 Amp	25mm	10 Pack

Earth Tags



Mains Earth Tag

- ▶ Packed in bags of 50 **"MAIN EARTH CONDUCTOR DO NOT DISCONNECT"**

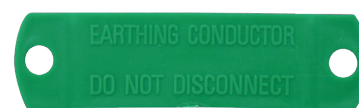
Code: ETAGMAIN Green



Copper Earth Tag

- ▶ Packed in bags of 50 **"EARTHING CONDUCTOR DO NOT DISCONNECT"**
- ▶ Fixes onto earth wire

Code: ETAGC Copper



Plastic Earth Tag

- ▶ Packed in bags of 50 **"EARTHING CONDUCTOR DO NOT DISCONNECT"**

Code: ETAGPR Red

Code: ETAGPG Green

Code: ETAGPM Red & Green Mix

Danger Signs

PRODUCT FEATURES

- ▶ DANGER signs are printed on rigid plastic.
- ▶ Slotted for banding to poles, screw holes for wall attachment
- ▶ Choice of arrow up, down, horizontal or combination mix
- ▶ Double sided and also available as self-adhesive labels

DANGER Signs		
Code	Description	Order Mix
DSMIX	2 sided	Each sheet of 5: 5 x A 3 x B 2 x C
DSHOR	2 sided	A and C

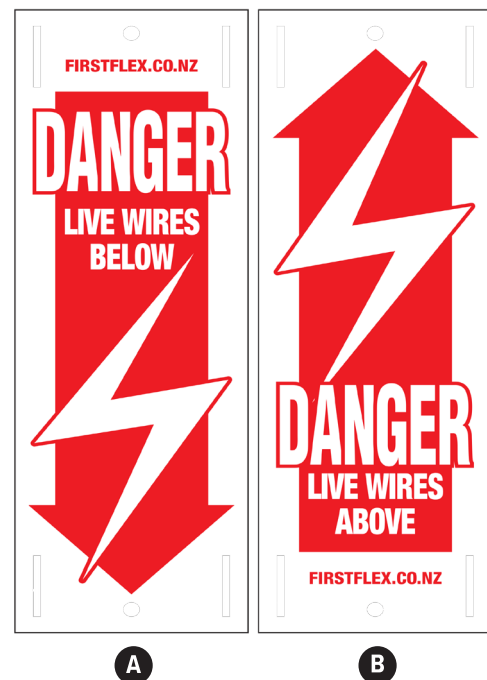


Danger Labels

PRODUCT FEATURES

- ▶ DANGER labels are silk screened onto self adhesive vinyl (sticker)
- ▶ Ready to be stuck in place
- ▶ Choice of arrow up or down
- ▶ Single sided red on white gloss

DANGER Labels		
Code	Description	Order Mix
DLDOWN	Arrow down	A only
DLUP	Arrow up	B only



Warning Tape

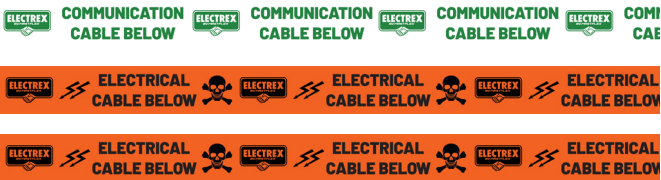


Electrical Wire Warning Tape must be used to identify a cable buried in the ground. Our tapes compliance to AS/NZS 2648.1 ensures that underground warning tape will survive in New Zealand’s harsh acidic soil environment.

Standard rolls available ex-stock or custom designed tape can be made to order. MOQ’s will apply + artwork setup and plate fees for custom orders.



Warning Tape - Below Ground		
Barrier Tape	Description	Colour
WCOM300W	Communication Cable Below	White/Green
WW100	Electrical Cable Below - 100m	Orange/Black
WW300	Electrical Cable Below - 300m	Orange/Black



Firstflex has taken every precaution to ensure accurate information in this catalogue, but accept no liability for any errors or omissions. Firstflex reserves the right to modify specifications at any time.