

AMPHENOL PLUGS & CONNECTORS

Amphenol Ecomate T3 Series.....214

Amphenol C146 Series..... 215

PL Series.....229



Ecomate T3 SERIES

**Amphenol Circular Connectors
with Threaded Collar M29
Diameter Polyamide**

APPLICATIONS:

Medical Industry Suitable for medical devices and test equipment with a threaded collar to prevent accidental uncoupling.

Multi Use Connectors Suitable for use on industrial machines and controls, data processing, instrumentation and marine.

PRODUCT FEATURES:

- ▶ New cable screw connection with clamping ring
- ▶ Strain relief and mounted gasket all in one component
- ▶ Ergonomically shaped handle for better grip and safer handling
- ▶ Fastening for the protective caps on the receptacle housing
- ▶ One cable housing for all cable diameters (6mm – 12.5mm)

CONSTRUCTION:

Body Polyamide with M29 threaded collar, neoprene gasket and PG9 gland to suit cable.

Diameter 6.0 – 12.5mm.

Contacts Silver plated copper.

3P + E Screw Terminal 400V Max. wire size 2.5mm² / AWG 14 / 16A 400V / 12A 250V @ 55°C.

6P + E Solder Terminal 250V Max. wire size 0.75mm² / AWG 20 / 13A 250V @ 55°C.

CHARACTERISTICS:

Operating Temperature Range

3 Pin + Earth Screw Terminal -40°C to 100°C

6 Pin + Earth Solder Terminal -40°C to 125°C

Protection Class IP67 when mated or with cap fitted.

Relevant Standards DIN 9684.1, DIN 5510, DIN EN 60526, DIN VDE 1781, DIN VDE 1780, UL-E33093, German Lloyd, CSA-48932.

Panel Mount

PANEL SOCKET	
Code	Type
T3111-000E	3P + E Female (C01620G00310012)
T3107-000E	6P + E Female (C01630G00610012)



PANEL PLUG	
Code	Type
T3110-000E	3P + E Male (C01620C00310012)
T3106-000E	6P + E Male (C01630C00610012)



Cord Mount Straight

CORD SOCKET STRAIGHT	
Code	Type
T3109-001E	3P + E Female (C01620D00311012)
T3105-001E	6P + E Female (C01630D00611012)



CORD PLUG STRAIGHT	
Code	Type
T3108-001E	3P + E Male (C01620H00311012)
T3104-001E	6P + E Male (C01630H00611012)



Cord Mount Angled

CORD SOCKET ANGLED	
Code	Type
T3109-081E	3P + E Female (C01620F00310012)
T3105-081E	6P + E Female (C01630F00610012)



CORD PLUG ANGLED	
Code	Type
T3108-081E	3P + E Male (C01620K00310012)
T3104-081E	6P + E Male (C01630K00610012)



Caps

SOCKET CAP (3P+E & 6P+E)	
Code	Type
T6483-200E	Panel-Short String (C01600V00000012)
T6483-201E	Cord-Long String (C01600V00001012)



PLUG CAP (3P+E & 6P+E)	
Code	Type
T6482-200E	Panel-Short String (C01600U00000012)
T6482-201E	Cord-Long String (C01600U00001012)



Firstflex has taken every precaution to ensure accurate information in this catalogue, but accept no liability for any errors or omissions. Firstflex reserves the right to modify specifications at any time.

C146 SERIES

Heavy Duty Amphenol Multi-Pole Power Connectors THERMOPLASTIC 3P + E
1 Lever, 10 Amp 400V

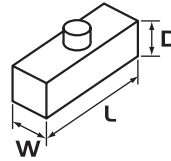
APPLICATIONS:

- Lighting & Entertainment** For multiple control connections on stages and movie sets.
- Medical Industry** Suitable for medical devices and test equipment with a threaded collar to prevent accidental uncoupling.
- Industrial Connectors** Suitable for use on industrial machines and controls, data processing and instrumentation.

PRODUCT FEATURES:

- ▶ Heavy duty thermoplastic body & base
- ▶ One lever (steel) locking mechanism to avoid disconnection
- ▶ IP65 when mated / IP53 for spring loaded hoods.

Sizes in mm



CONSTRUCTION:

- Body & Base** Thermoplastic.
- Insert** Thermoplastic with silver plated contacts 3 Pole + Earth 10A 400V.
- Screw Terminal** 0.25 – 2.5mm².
- Lever** Single mild steel.

CHARACTERISTICS:

- Operating Temperature Range** -40°C to +100°C.
- Protection Class** IP65 when mated / IP53 for spring loaded hoods.
- Relevant Standards** DIN VDE 0110, IEC60664, IEC 60529, UL-E63093, CSA-48932.



C146 10A 003 0024
 Male Insert Screw Terminal
W 21 L 21 D 39



C146 10B 003 0024
 Female Insert Screw Terminal
W 21 L 21 D 39



C146 VN16 110 0004
 Trumpet Strain Relief, PG11
 Cable < 10.5mm



C146 VN16 110 0014
 Gland Bush C/W Seal PG11,
 Cable 7.0 – 12.5mm



C146 10G 003 6004
 Top Entry Hood PG11,
 2 Stud, Plastic
W 27 L 34 D 50



C146 10G 003 8044
 Cable Mount Base PG11,
 1 Lever, Plastic
W 27 L 37 D 50



C146 10F 003 0004
 Surface Mount Base Straight
 Open 1 Lever, Plastic
W 28 L 40 D 22



C146 10F 003 0044
 Surface Mount Base Angled,
 Open 1 Lever, Plastic
W 41 L 40 D 26

Other non C146 series accessories available:



GPG11SUP
 Nylon Gland PG11 C/W Pigtail Support
 (Cable 4.0 – 10.0mm)



GPG11
 Nylon Gland PG11
 (Cable 4.0 – 10.0mm)

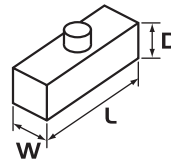
Firstflex has taken every precaution to ensure accurate information in this catalogue, but accept no liability for any errors or omissions. Firstflex reserves the right to modify specifications at any time.

AMPHENOL PLUGS & CONNECTORS

C146 SERIES

Heavy Duty Amphenol Multi-Pole Power Connectors ALUMINIUM 3P + E
1 Lever, 10 Amp 400V

Sizes in mm



APPLICATIONS:

Lighting & Entertainment For multiple control connections on stages and movie sets.

Medical Industry Suitable for medical devices and test equipment with a threaded collar to prevent accidental uncoupling.

Industrial Connectors Suitable for use on industrial machines and controls, data processing and instrumentation.

PRODUCT FEATURES:

- ▶ Heavy duty alloy body & base
- ▶ One lever (steel) locking mechanism to avoid disconnection
- ▶ IP65 when mated / IP53 for spring loaded hoods.

CONSTRUCTION:

Body & Base Aluminium die cast alloy.

Insert Thermoplastic with silver plated contacts 3 Pole + Earth 10A 400V.

Screw Terminal 0.25 – 2.5mm².

Lever Single mild steel.

CHARACTERISTICS:

Operating Temperature Range -40°C to +100°C.

Protection Class IP65 when mated / IP53 for spring loaded hoods.

Relevant Standards DIN VDE 0110, IEC 60664, IEC 60529, UL-E63093, CSA-48932.



C146 10A 003 0024
 Male Insert Screw Terminal
W 21 L 21 D 39



C146 10B 003 0024
 Female Insert Screw Terminal
W 21 L 21 D 39



C146 VN16 110 0004
 Trumpet Strain Relief, PG11
 Cable < 10.5mm



C146 VN16 110 0014
 Gland Bush C/W Seal PG11,
 Cable 7.0 – 12.5mm



C146 30G 003 6004
 Top Entry Hood PG11,
 2 Stud, Metal
W 27 L 34 D 50



C146 30G 003 8044
 Cable Mount Base PG11,
 1 Lever, Metal
W 27 L 37 D 50



C146 30F 003 0004
 Surface Mount Base Straight
 Open 1 Lever, Metal
W 28 L 40 D 22

Other non C146 series accessories available:



GPG11SUP
 Nylon Gland PG11 C/W Pigtail Support
 (Cable 4.0 – 10.0mm)



GPG11
 Nylon Gland PG11
 (Cable 4.0 – 10.0mm)

Firstflex has taken every precaution to ensure accurate information in this catalogue, but accept no liability for any errors or omissions. Firstflex reserves the right to modify specifications at any time.

C146 SERIES

Heavy Duty Amphenol Multi-Pole Power Connectors THERMOPLASTIC 4P + E
1 Lever, 10 Amp 400V

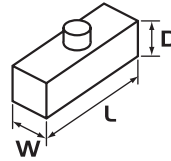
APPLICATIONS:

- Lighting & Entertainment** For multiple control connections on stages and movie sets.
- Medical Industry** Suitable for medical devices and test equipment with a threaded collar to prevent accidental uncoupling.
- Industrial Connectors** Suitable for use on industrial machines and controls, data processing and instrumentation.

PRODUCT FEATURES:

- ▶ Heavy duty thermoplastic body & base
- ▶ One lever (steel) locking mechanism to avoid disconnection
- ▶ IP65 when mated / IP53 for spring loaded hoods.

Sizes in mm



CONSTRUCTION:

- Body & Base** Thermoplastic.
- Insert** Thermoplastic with silver plated contacts 4 Pole + Earth 10A 400V.
- Screw Terminal** 0.25 – 2.5mm².
- Lever** Single mild steel.

CHARACTERISTICS:

- Operating Temperature Range** -40°C to +100°C.
- Protection Class** IP65 when mated / IP53 for spring loaded hoods.
- Relevant Standards** DIN VDE 0110, IEC60664, IEC 60529, UL-E63093, CSA-48932.



C146 10A 004 0024
 Male Insert Screw Terminal
W 21 L 21 D 39



C146 10B 004 0024
 Female Insert Screw Terminal
W 21 L 21 D 39



C146 VN16 110 0004
 Trumpet Strain Relief, PG11
 Cable < 10.5mm



C146 VN16 110 0014
 Gland Bush C/W Seal PG11,
 Cable 7.0 – 12.5mm



C146 10G 003 6004
 Top Entry Hood PG11,
 2 Stud, Plastic
W 27 L 34 D 50



C146 10G 003 8044
 Cable Mount Base PG11,
 1 Lever, Plastic
W 27 L 37 D 50



C146 10F 003 0004
 Surface Mount Base Straight
 Open 1 Lever, Plastic
W 28 L 40 D 22



C146 10F 003 0044
 Surface Mount Base Angled,
 Open 1 Lever, Plastic
W 41 L 40 D 26

Other non C146 series accessories available:



GPG11SUP
 Nylon Gland PG11 C/W Pigtail Support
 (Cable 4.0 – 10.0mm)



GPG11
 Nylon Gland PG11
 (Cable 4.0 – 10.0mm)

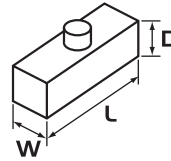
Firstflex has taken every precaution to ensure accurate information in this catalogue, but accept no liability for any errors or omissions. Firstflex reserves the right to modify specifications at any time.

AMPHENOL PLUGS & CONNECTORS

C146 SERIES

Heavy Duty Amphenol Multi-Pole Power Connectors ALUMINIUM 4P + E
1 Lever, 10 Amp 400V

Sizes in mm



APPLICATIONS:

Lighting & Entertainment For multiple control connections on stages and movie sets.

Medical Industry Suitable for medical devices and test equipment with a threaded collar to prevent accidental uncoupling.

Industrial Connectors Suitable for use on industrial machines and controls, data processing and instrumentation.

PRODUCT FEATURES:

- ▶ Heavy duty alloy body & base
- ▶ One lever (steel) locking mechanism to avoid disconnection
- ▶ IP65 when mated / IP53 for spring loaded hoods.

CONSTRUCTION:

Body & Base Aluminium die cast alloy.

Insert Thermoplastic with silver plated contacts 4 Pole + Earth 10A 400V.

Screw Terminal 0.25 – 2.5mm².

Lever Single mild steel.

CHARACTERISTICS:

Operating Temperature Range -40°C to +100°C.

Protection Class IP65 when mated / IP53 for spring loaded hoods.

Relevant Standards DIN VDE 0110, IEC 60664, IEC 60529, UL-E63093, CSA-48932.



C146 10A 004 0024
 Male Insert Screw Terminal
W 21 L 21 D 39



C146 10B 004 0024
 Female Insert Screw Terminal
W 21 L 21 D 39



C146 VN16 110 0004
 Trumpet Strain Relief, PG11
 Cable < 10.5mm



C146 VN16 110 0014
 Gland Bush C/W Seal PG11,
 Cable 7.0 – 12.5mm



C146 30G 003 6004
 Top Entry Hood PG11,
 2 Stud, Metal
W 27 L 34 D 50



C146 30G 003 8044
 Cable Mount Base PG11,
 1 Lever, Metal
W 27 L 37 D 50



C146 30F 003 0004
 Surface Mount Base Straight
 Open 1 Lever, Metal
W 28 L 40 D 22

Other non C146 series accessories available:



GPG11SUP
 Nylon Gland PG11 C/W Pigtail Support
 (Cable 4.0 – 10.0mm)



GPG11
 Nylon Gland PG11
 (Cable 4.0 – 10.0mm)

Firstflex has taken every precaution to ensure accurate information in this catalogue, but accept no liability for any errors or omissions. Firstflex reserves the right to modify specifications at any time.

C146 SERIES

Heavy Duty Amphenol Multi-Pole Power Connectors ALUMINIUM 6P + E
1 Lever, 16 Amp 400V

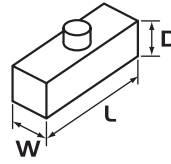
APPLICATIONS:

- Lighting & Entertainment** For multiple control connections on stages and movie sets.
- Medical Industry** Suitable for medical devices and test equipment with a threaded collar to prevent accidental uncoupling.
- Industrial Connectors** Suitable for use on industrial machines and controls, data processing and instrumentation.

PRODUCT FEATURES:

- ▶ Heavy duty alloy body & base
- ▶ One lever (steel) locking mechanism to avoid disconnection
- ▶ IP65 when mated / IP53 for spring loaded hoods.

Sizes in mm



CONSTRUCTION:

- Body & Base** Aluminium die cast alloy.
- Insert** Thermoplastic with wire protection & silver plated contacts
- 6 Pole + Earth** 16A 400V.
- Screw Terminal** 0.5 – 6.0mm².
- Lever** Single mild steel.

CHARACTERISTICS:

- Operating Temperature Range** -40°C to +125°C.
- Protection Class** IP65 when mated / IP53 for spring loaded hoods.
- Relevant Standards** DIN VDE 0110, IEC 60664, IEC 60529, UL-E63093, CSA-48932.



C146 10A 006 1021
Male Insert Screw Terminal
W 27 L 44 D 31



C146 10B 006 1021
Female Insert Screw Terminal
W 27 L 44 D 32



C146 VN16 135 0002
Trumpet Strain Relief, PG13.5 (Cable < 14.0mm)
C146 VN16 160 0002
Trumpet Strain Relief, PG16 (Cable < 16.0mm)



C146 VN16 135 0014
Gland Bush C/W Seal, PG13.5 (Cable 7.0 – 15.0mm)
C146 VN16 160 0014
Gland Bush C/W Seal, PG16 (Cable 8.0 – 16.0mm)



C146 10G 006 5001
Side Entry Hood PG13.5, 2 Stud **W 43 L 50 D 61**
C146 10G 006 5011
Side Entry Hood PG16, 2 Stud **W 43 L 50 D 61**



C146 10G 006 6001
Top Entry Hood PG13.5, 2 Stud **W 43 L 50 D 61**
C146 10G 006 6011
Top Entry Hood PG16, 2 Stud **W 43 L 50 D 61**



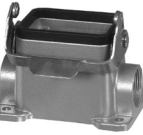
C146 10G 006 8041
Cable Mount Base PG13.5, 1 Lever **W 43 L 50 D 62**
C146 10G 006 8051
Cable Mount Base PG16, 1 Lever **W 43 L 50 D 62**



C146 10F 006 0001
Surface Mount Base,
Open, 1 Lever
W 43 L 80 D 29



C146 10F 006 0031
Surface Mount Base Enclosed Open, 1 Lever,
C/W Dust Cover
W 43 L 80 D 29



C146 10F 006 5001
Surface Mount Base Enclosed, 1 Lever,
1 x PG16 Side Entry
W 54 L 84 D 54



C146 10F 006 8061
Surface Mount Base Enclosed, 1 Lever,
1 x PG16 Side Entry, C/W Dust Cover
W 54 L 84 D 54

Other non C146 series accessories available:



GPG13.5SUP
Nylon Gland PG13.5 C/W Pigtail Support (Cable 5.0 – 12.5mm)
GPG16SUP
Nylon Gland PG16 C/W Pigtail Support (Cable 6.0 – 14.0mm)



GPG13.5
Nylon Gland PG13.5 (Cable 5.0 – 12.5mm)
GPG16
Nylon Gland PG16 (Cable 6.0 – 14.0mm)

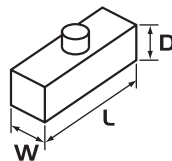
Firstflex has taken every precaution to ensure accurate information in this catalogue, but accept no liability for any errors or omissions. Firstflex reserves the right to modify specifications at any time.

AMPHENOL PLUGS & CONNECTORS

C146 SERIES

Heavy Duty Amphenol Multi-Pole Power Connectors ALUMINIUM 6P + E
1 Lever, 42 Amp 400V

Sizes in mm



APPLICATIONS:

Lighting & Entertainment For multiple control connections on stages and movie sets.

Medical Industry Suitable for medical devices and test equipment with a threaded collar to prevent accidental uncoupling.

Industrial Connectors Suitable for use on industrial machines and controls, data processing and instrumentation.

PRODUCT FEATURES:

- ▶ Heavy duty alloy body & base
- ▶ One lever (steel) locking mechanism to avoid disconnection
- ▶ IP65 when mated / IP53 for spring loaded hoods

CONSTRUCTION:

Body & Base Aluminium die cast alloy.

Insert Thermoplastic with wire protection & silver plated contacts
 6 Pole + Earth 42A 400V.

Screw Terminal 0.5 – 6.0mm².

Lever Single mild steel.

CHARACTERISTICS:

Operating Temperature Range -40°C to +125°C.

Protection Class IP65 when mated / IP53 for spring loaded hoods.

Relevant Standards DIN VDE 0110, IEC 60664, IEC 60529, UL-E63093, CSA-48932.



C146 10A 006 1025

Male Insert Screw Terminal
W 34 L 85 D 34



C146 10B 006 1025

Female Insert Screw Terminal
W 34 L 85 D 34



C146 VN16 210 0002

Trumpet Strain Relief, PG21 (Cable < 21.0mm)

C146 VN16 290 0002

Trumpet Strain Relief, PG29 (Cable < 30.0mm)



C146 VN16 210 0014

Gland Bush C/W Seal, PG21 (Cable 11.0 – 22.0mm)

C146 VN16 290 0014

Gland Bush C/W Seal, PG29 (Cable 19.0 – 31.0mm)



C146 10G 016 6061

Top Entry Hood, PG21, 2 Stud **W 43 L 94 D 62**

C146 10G 016 6071

Top Entry Hood, PG29, 2 Stud **W 43 L 94 D 62**



C146 10G 016 5061

Side Entry Hood, PG21, 2 Stud
W 43 L 94 D 62



C146 10G 016 8041

Cable Mount Base, PG21, 1 Lever
W 43 L 94 D 62



C146 10F 016 0011

Cable Mount Base Open, 1 Lever
W 43 L 113 D 29



C146 10F 016 0031

Surface Mount Base Open, 1 Lever
 C/W Dust Cover
W 43 L 113 D 29

Other non C146 series accessories available:



GPG21SUP

Nylon Gland PG21 C/W Pigtail Support
 (Cable 10.0 – 17.5mm)



GPG21

Nylon Gland PG21 (Cable 10.0 – 17.5mm)

GPG29

Nylon Gland PG29 (Cable 16.0 – 24.0mm)

Firstflex has taken every precaution to ensure accurate information in this catalogue, but accept no liability for any errors or omissions. Firstflex reserves the right to modify specifications at any time.

C146 SERIES

Heavy Duty Amphenol Multi-Pole Power Connectors ALUMINIUM 6P + E
2 Lever, 42 Amp 400V

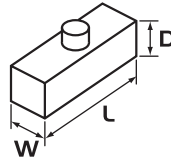
APPLICATIONS:

- Lighting & Entertainment** For multiple control connections on stages and movie sets.
- Medical Industry** Suitable for medical devices and test equipment with a threaded collar to prevent accidental uncoupling.
- Industrial Connectors** Suitable for use on industrial machines and controls, data processing and instrumentation.

PRODUCT FEATURES:

- ▶ Heavy duty alloy body & base
- ▶ Two lever (steel) locking mechanism to avoid disconnection
- ▶ IP65 when mated / IP53 for spring loaded hoods.

Sizes in mm



CONSTRUCTION:

- Body & Base** Aluminium die cast alloy.
- Insert** Thermoplastic with wire protection & silver plated contacts
- 6 Pole + Earth** 42A 400V.
- Screw Terminal** 0.5 – 6.0mm².
- Lever** Double mild steel.

CHARACTERISTICS:

- Operating Temperature Range** -40°C to +125°C.
- Protection Class** IP65 when mated / IP53 for spring loaded hoods.
- Relevant Standards** DIN VDE 0110, IEC 60664, IEC 60529, UL-E63093, CSA-48932.



C146 10A 006 1025
 Male Insert Screw Terminal
W 34 L 85 D 34



C146 10B 006 1025
 Female Insert Screw Terminal
W 34 L 85 D 34



C146 VN16 210 0002
 Trumpet Strain Relief, PG21 (Cable < 21.0mm)
C146 VN16 290 0002
 Trumpet Strain Relief, PG29 (Cable < 30.0mm)



C146 VN16 210 0014
 Gland Bush C/W Seal, PG21 (Cable 11.0 – 22.0mm)
C146 VN16 290 0014
 Gland Bush C/W Seal, PG29 (Cable 19.0 – 31.0mm)



C146 10Z 016 1001
 Protective Cover, 4 Stud
W 44 L 97 D 20



C146 10G 016 6001
 Top Entry Hood, PG21, 4 Stud **W 43 L 94 D 62**



C146 10G 016 6011
 Top Entry Hood, PG29, 4 Stud **W 43 L 94 D 62**



C146 10G 016 5001
 Side Entry Hood, PG21, 4 Stud
W 43 L 94 D 62



C146 10G 016 8021
 Cable Mount Base, PG21, 2 Lever **W 43 L 94 D 62**



C146 10G 016 8038
 Cable Mount Base, PG29, 2 Lever **W 43 L 94 D 76**



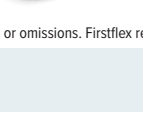
C146 10G 016 6021
 Cable Mount Base, PG21, 2 Lever, No Gasket
(Suit C146 10F 016 0021)
W 43 L 94 D 62



C146 10F 016 0001
 Surface Mount Base, Open, 2 Lever
W 43 L 113 D 29



C146 10F 016 0021
 Surface Mount Base, Open, 4 Stud Only, No Levers
 C/W Dust Cover *(Suit C146 10G 016 6021)*
W 43 L 113 D 29



C146 10F 016 5001
 Surface Mount Base, Enclosed, 2 Lever,
 1 x PG21 Side Entry
W 57 L 117 D 64

Other non C146 series accessories available:



GPG21SUP
 Nylon Gland PG21 C/W Pigtail Support
 (Cable 10.0 – 17.5mm)



GPG21
 Nylon Gland PG21 (Cable 10.0 – 17.5mm)

GPG29
 Nylon Gland PG29 (Cable 16.0 – 24.0mm)

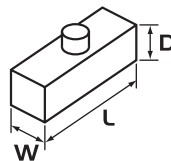
Firstflex has taken every precaution to ensure accurate information in this catalogue, but accept no liability for any errors or omissions. Firstflex reserves the right to modify specifications at any time.

AMPHENOL PLUGS & CONNECTORS

C146 SERIES

Heavy Duty Amphenol Multi-Pole Power Connectors ALUMINIUM 10P + E
1 Lever, 16 Amp 400V

Sizes in mm



APPLICATIONS:

Lighting & Entertainment For multiple control connections on stages and movie sets.

Medical Industry Suitable for medical devices and test equipment with a threaded collar to prevent accidental uncoupling.

Industrial Connectors Suitable for use on industrial machines and controls, data processing and instrumentation.

PRODUCT FEATURES:

- ▶ Heavy duty alloy body & base
- ▶ One lever (steel) locking mechanism to avoid disconnection
- ▶ IP65 when mated / IP53 for spring loaded hoods

CONSTRUCTION:

Body & Base Aluminium die cast alloy.

Insert Thermoplastic with wire protection & silver plated contacts
 10 Pole + Earth 16A 400V.

Screw Terminal 0.5 – 6.0mm².

Lever Single mild steel.

CHARACTERISTICS:

Operating Temperature Range -40°C to +125°C.

Protection Class IP65 when mated / IP53 for spring loaded hoods.

Relevant Standards DIN VDE 0110, IEC 60664, IEC 60529, UL-E63093, CSA-48932.



C146 10A 010 1021

Male Insert Screw Terminal
W 27 L 57 D 31



C146 10B 010 1021

Female Insert Screw Terminal
W 27 L 57 D 32



C146 VN16 160 0002

Trumpet Strain Relief, PG16 (Cable < 16.0mm)

C146 VN16 210 0002

Trumpet Strain Relief, PG21 (Cable < 21.0mm)

C146 VN16 290 0002

Trumpet Strain Relief, PG29 (Cable < 30.0mm)



C146 VN16 160 0014

Gland Bush C/W Seal, PG16 (Cable 8.0 – 16.0mm)

C146 VN16 210 0014

Gland Bush C/W Seal, PG21 (Cable 11.0 – 22.0mm)

C146 VN16 290 0014

Gland Bush C/W Seal, PG29 (Cable 19.0 – 31.0mm)



C146 10G 010 6061

Top Entry Hood, PG16, 2 Stud **W 43 L 73 D 51**

C146 10G 010 6071

Top Entry Hood, PG21, 2 Stud **W 43 L 73 D 51**



C146 10G 010 5061

Side Entry Hood, PG16, 2 Stud **W 43 L 73 D 51**

C146 10G 010 5068

Side Entry Hood, PG21, 2 Stud **W 43 L 73 D 70**



C146 10F 010 0011

Surface Mount Base Open, 1 Lever
W 43 L 93 D 29



C146 10F 010 0031

Surface Mount Base Open, 1 Lever,
 C/W Dust Cover
W 43 L 93 D 29



C146 10F 010 8061

Surface Mount Base Enclosed, 1 Lever,
 1 x PG16 Side Entry, C/W Dust Cover
W 54 L 94 D 57

Other non C146 series accessories available:



GPG16SUP

Nylon Gland PG16 C/W Pigtail Support (Cable 6.0 – 14.0mm)

GPG21SUP

Nylon Gland PG21 C/W Pigtail Support (Cable 10.0 – 17.5mm)



GPG16 Nylon Gland PG16 (Cable 6.0 – 14.0mm)

GPG21 Nylon Gland PG21 (Cable 10.0 – 17.5mm)

GPG29 Nylon Gland PG29 (Cable 16.0 – 24.0mm)

Firstflex has taken every precaution to ensure accurate information in this catalogue, but accept no liability for any errors or omissions. Firstflex reserves the right to modify specifications at any time.

C146 SERIES

Heavy Duty Amphenol Multi-Pole Power Connectors ALUMINIUM 10P + E
2 Lever, 16 Amp 400V

APPLICATIONS:

- Lighting & Entertainment** For multiple control connections on stages and movie sets.
- Medical Industry** Suitable for medical devices and test equipment with a threaded collar to prevent accidental uncoupling.
- Industrial Connectors** Suitable for use on industrial machines and controls, data processing and instrumentation.

PRODUCT FEATURES:

- ▶ Heavy duty alloy body & base
- ▶ Two lever (steel) locking mechanism to avoid disconnection
- ▶ IP65 when mated / IP53 for spring loaded hoods



C146 10A 010 1021
Male Insert Screw Terminal
W 27 L 57 D 31



C146 10B 010 1021
Female Insert Screw Terminal
W 27 L 57 D 32



C146 VN16 160 0002
Trumpet Strain Relief, PG16 (Cable < 16.0mm)
C146 VN16 210 0002
Trumpet Strain Relief, PG21 (Cable < 21.0mm)
C146 VN16 290 0002
Trumpet Strain Relief, PG29 (Cable < 30.0mm)

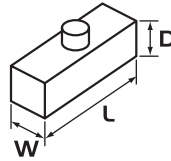


C146 VN16 160 0014
Gland Bush C/W Seal, PG16 (Cable 8.0 – 16.0mm)
C146 VN16 210 0014
Gland Bush C/W Seal, PG21 (Cable 11.0 – 22.0mm)
C146 VN16 290 0014
Gland Bush C/W Seal, PG29 (Cable 19.0 – 31.0mm)



C146 10Z 010 1001
Protective Cover, 4 Stud
W 44 L 76 D 20

Sizes in mm



CONSTRUCTION:

- Body & Base** Aluminium die cast alloy.
- Insert** Thermoplastic with wire protection & silver plated contacts
- 10 Pole + Earth** 16A 400V.
- Screw Terminal** 0.5 – 6.0mm².
- Lever** Double mild steel.

CHARACTERISTICS:

- Operating Temperature Range** -40°C to +125°C.
- Protection Class** IP65 when mated / IP53 for spring loaded hoods.
- Relevant Standards** DIN VDE 0110, IEC 60664, IEC 60529, UL-E63093, CSA-48932.



C146 10G 010 6001
Top Entry Hood, PG16, 4 Stud W 43 L 73 D 51
C146 10G 010 6011
Top Entry Hood, PG21, 4 Stud W 43 L 73 D 51
C146 10G 010 6018
Top Entry Hood, PG29, 4 Stud W 43 L 73 D 70



C146 10G 010 5001
Side Entry Hood, PG16, 4 Stud W 43 L 73 D 51
C146 10G 010 5011
Side Entry Hood, PG21, 4 Stud W 43 L 73 D 70



C146 10G 010 8028
Cable Mount Base, PG21, 2 Lever
W 43 L 73 D 70



C146 10G 010 6021
Cable Mount Base, PG16, 2 Lever
W 43 L 73 D 51



C146 10F 010 0001
Surface Mount Base Open, 2 Lever
W 43 L 93 D 29



C146 10F 010 0021
Surface Mount Base Open, 4 Stud Only,
C/W Dust Cover (Suit C146 10G 010 6021)
W 43 L 93 D 29



C146 10F 010 5001
Surface Mount Base Enclosed, 2 Lever,
1 x PG16 Side Entry
W 54 L 94 D 57

Other non C146 series accessories available:



GPG16SUP
Nylon Gland PG16 C/W Pigtail Support (Cable 6.0 – 14.0mm)
GPG21SUP
Nylon Gland PG21 C/W Pigtail Support (Cable 10.0 – 17.5mm)



GPG16 Nylon Gland PG16 (Cable 6.0 – 14.0mm)
GPG21 Nylon Gland PG21 (Cable 10.0 – 17.5mm)
GPG29 Nylon Gland PG29 (Cable 16.0 – 24.0mm)

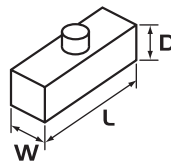
Firstflex has taken every precaution to ensure accurate information in this catalogue, but accept no liability for any errors or omissions. Firstflex reserves the right to modify specifications at any time.

AMPHENOL PLUGS & CONNECTORS

C146 SERIES

Heavy Duty Amphenol Multi-Pole Power Connectors ALUMINIUM 16P + E
1 Lever, 16 Amp 400V

Sizes in mm



APPLICATIONS:

Lighting & Entertainment For multiple control connections on stages and movie sets.

Medical Industry Suitable for medical devices and test equipment with a threaded collar to prevent accidental uncoupling.

Industrial Connectors Suitable for use on industrial machines and controls, data processing and instrumentation.

PRODUCT FEATURES:

- ▶ Heavy duty alloy body & base
- ▶ One lever (steel) locking mechanism to avoid disconnection
- ▶ IP65 when mated / IP53 for spring loaded hoods

CONSTRUCTION:

Body & Base Aluminium die cast alloy.

Insert Thermoplastic with wire protection & silver plated contacts
 16 Pole + Earth 16A 400V.

Screw Terminal 0.5 – 6.0mm².

Lever Single mild steel.

CHARACTERISTICS:

Operating Temperature Range -40°C to +125°C.

Protection Class IP65 when mated / IP53 for spring loaded hoods.

Relevant Standards DIN VDE 0110, IEC 60664, IEC 60529, UL-E63093, CSA-48932.



C146 10A 016 1021

Male Insert Screw Terminal
W 27 L 78 D 31



C146 10B 016 1021

Female Insert Screw Terminal
W 27 L 78 D 31



C146 VN16 210 0002

Trumpet Strain Relief, PG21 (Cable < 21.0mm)



C146 VN16 210 0014

Gland Bush C/W Seal, PG21 (Cable 11.0 – 22.0mm)



C146 10G 016 6061

Top Entry Hood, PG21, 2 Stud
W 43 L 94 D 62



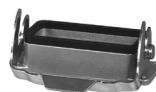
C146 10G 016 5061

Side Entry Hood, PG21, 2 Stud
W 43 L 94 D 62



C146 10G 016 8041

Cable Mount Base, PG21, 1 Lever
W 43 L 94 D 62



C146 10F 016 0011

Surface Mount Base, Open, 1 Lever
W 43 L 113 D 29



C146 10F 016 0031

Surface Mount Base, Open, 1 Lever,
 C/W Dust Cover
W 43 L 113 D 29



C146 10F 016 8061

Surface Mount Base, Enclosed, 1 Lever,
 1 x PG21 Side Entry, C/W Dust Cover
W 57 L 117 D 64

Other non C146 series accessories available:



GPG21SUP

Nylon Gland PG21 C/W Pigtail Support
 (Cable 10.0 – 17.5mm)



GPG21

Nylon Gland PG21
 (Cable 10.0 – 17.5mm)

Firstflex has taken every precaution to ensure accurate information in this catalogue, but accept no liability for any errors or omissions. Firstflex reserves the right to modify specifications at any time.

C146 SERIES

Heavy Duty Amphenol Multi-Pole Power Connectors ALUMINIUM 16P + E
2 Lever, 16 Amp 400V

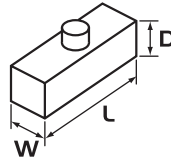
APPLICATIONS:

- Lighting & Entertainment** For multiple control connections on stages and movie sets.
- Medical Industry** Suitable for medical devices and test equipment with a threaded collar to prevent accidental uncoupling.
- Industrial Connectors** Suitable for use on industrial machines and controls, data processing and instrumentation.

PRODUCT FEATURES:

- ▶ Heavy duty alloy body & base
- ▶ Two lever (steel) locking mechanism to avoid disconnection
- ▶ IP65 when mated / IP53 for spring loaded hoods

Sizes in mm



CONSTRUCTION:

- Body & Base** Aluminium die cast alloy.
- Insert** Thermoplastic with wire protection & silver plated contacts
- 16 Pole + Earth** 16A 400V.
- Screw Terminal** 0.5 – 6.0mm².
- Lever** Double mild steel.

CHARACTERISTICS:

- Operating Temperature Range** -40°C to +125°C.
- Protection Class** IP65 when mated / IP53 for spring loaded hoods.
- Relevant Standards** DIN VDE 0110, IEC 60664, IEC 60529, UL-E63093, CSA-48932.



C146 10A 016 1021
Male Insert Screw Terminal
W 27 L 78 D 31



C146 10B 016 1021
Female Insert Screw Terminal
W 27 L 78 D 31



C146 VN16 210 0002
Trumpet Strain Relief, PG21 (Cable < 21.0mm)
C146 VN16 290 0002
Trumpet Strain Relief, PG29 (Cable < 30.0mm)



C146 VN16 210 0014
Gland Bush C/W Seal, PG21 (Cable 11.0 – 22.0mm)
C146 VN16 290 0014
Gland Bush C/W Seal, PG29 (Cable 19.0 – 31.0mm)



C146 10Z 016 1001
Protective Cover, 4 Stud
W 44 L 97 D 20



C146 10G 016 6001
Top Entry Hood, PG21, 4 Stud **W 43 L 94 D 62**
C146 10G 016 6011
Top Entry Hood, PG29, 4 Stud **W 43 L 94 D 62**



C146 10G 016 5001
Side Entry Hood, PG21, 4 Stud
W 43 L 94 D 62



C146 10G 016 8021
Cable Mount Base, PG21, 2 Lever **W 43 L 94 D 62**
C146 10G 016 8038
Cable Mount Base, PG29, 2 Lever **W 43 L 94 D 76**



C146 10G 016 6021
Cable Mount Base, PG21, 2 Lever, C/W Dust Cover
(Suit C146 10G 016 0021)
W 43 L 94 D 62



C146 10F 016 0001
Surface Mount Base, Open, 2 Lever
W 43 L 113 D 29



C146 10F 016 0021
Surface Mount Base, Open, 4 Stud Only, C/W Dust Cover
(Suit C146 10G 016 6021)
W 43 L 113 D 29



C146 10F 016 5001
Surface Mount Base, Enclosed, 2 Lever,
1 x PG21, Side Entry
W 57 L 117 D 64

Other non C146 series accessories available:



GPG21SUP
Nylon Gland PG21 C/W Pigtail Support
(Cable 10.0 – 17.5mm)



GPG21
Nylon Gland PG21 (Cable 10.0 – 17.5mm)

GPG29
Nylon Gland PG29 (Cable 16.0 – 24.0mm)

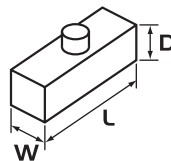
Firstflex has taken every precaution to ensure accurate information in this catalogue, but accept no liability for any errors or omissions. Firstflex reserves the right to modify specifications at any time.

AMPHENOL PLUGS & CONNECTORS

C146 SERIES

Heavy Duty Amphenol Multi-Pole Power Connectors ALUMINIUM 24P + E
1 Lever, 16 Amp 400V

Sizes in mm



APPLICATIONS:

Lighting & Entertainment For multiple control connections on stages and movie sets.

Medical Industry Suitable for medical devices and test equipment with a threaded collar to prevent accidental uncoupling.

Industrial Connectors Suitable for use on industrial machines and controls, data processing and instrumentation.

PRODUCT FEATURES:

- ▶ Heavy duty alloy body & base
- ▶ One lever (steel) locking mechanism to avoid disconnection
- ▶ IP65 when mated / IP53 for spring loaded hoods

CONSTRUCTION:

Body & Base Aluminium die cast alloy.

Insert Thermoplastic with wire protection & silver plated contacts
 24 Pole + Earth 16A 400V.

Screw Terminal 0.5 – 6.0mm².

Lever Single mild steel.

CHARACTERISTICS:

Operating Temperature Range -40°C to +125°C.

Protection Class IP65 when mated / IP53 for spring loaded hoods.

Relevant Standards DIN VDE 0110, IEC 60664, IEC 60529, UL-E63093, CSA-48932.



C146 10A 024 1021

Male Insert Screw Terminal
W 27 L 104 D 31



C146 10B 024 1021

Female Insert Screw Terminal
W 27 L 104 D 32



C146 VN16 210 0002

Trumpet Strain Relief, PG21 (Cable < 21.0mm)

C146 VN16 290 0002

Trumpet Strain Relief, PG29 (Cable < 30.0mm)



C146 VN16 210 0014

Gland Bush C/W Seal, PG21 (Cable 11.0 – 22.0mm)

C146 VN16 290 0014

Gland Bush C/W Seal, PG29 (Cable 19.0 – 31.0mm)



C146 10G 024 6061

Top Entry Hood PG21, 2 Stud **W 43 L 120 D 62**

C146 10G 024 6071

Top Entry Hood PG29, 2 Stud **W 43 L 120 D 62**



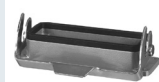
C146 10G 024 5071

Side Entry Hood, PG29, 2 Stud
W 43 L 120 D 76



C146 10F 024 0031

Cable Mount Base, PG21, 1 Lever
W 43 L 140 D 29



C146 10F 024 0011

Surface Mount Base, Open, 1 Lever
W 43 L 140 D 29

Other non C146 series accessories available:



GPG21SUP

Nylon Gland PG21 C/W Pigtail Support
 (Cable 10.0 – 17.5mm)



GPG21

Nylon Gland PG21 (Cable 10.0 – 17.5mm)

GPG29

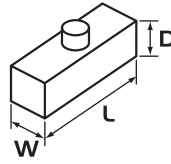
Nylon Gland PG29 (Cable 16.0 – 24.0mm)

Firstflex has taken every precaution to ensure accurate information in this catalogue, but accept no liability for any errors or omissions. Firstflex reserves the right to modify specifications at any time.

C146 SERIES

Heavy Duty Amphenol Multi-Pole Power Connectors ALUMINIUM 24P + E
2 Lever, 16 Amp 400V

Sizes in mm



APPLICATIONS:

- Lighting & Entertainment** For multiple control connections on stages and movie sets.
- Medical Industry** Suitable for medical devices and test equipment with a threaded collar to prevent accidental uncoupling.
- Industrial Connectors** Suitable for use on industrial machines and controls, data processing and instrumentation.

PRODUCT FEATURES:

- ▶ Heavy duty alloy body & base
- ▶ Two lever (steel) locking mechanism to avoid disconnection
- ▶ IP65 when mated / IP53 for spring loaded hoods

CONSTRUCTION:

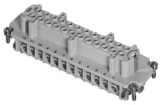
- Body & Base** Aluminium die cast alloy.
- Insert** Thermoplastic with wire protection & silver plated contacts 24 Pole + Earth 16A 400V.
- Screw Terminal** 0.5 – 6.0mm².
- Lever** Double mild steel.

CHARACTERISTICS:

- Operating Temperature Range** -40°C to +125°C.
- Protection Class** IP65 when mated / IP53 for spring loaded hoods.
- Relevant Standards** DIN VDE 0110, IEC 60664, IEC 60529, UL-E63093, CSA-48932.



C146 10A 024 1021
 Male Insert Screw Terminal
W 27 L 104 D 31



C146 10B 024 1021
 Female Insert Screw Terminal
W 27 L 104 D 32



C146 VN16 210 0002
 Trumpet Strain Relief, PG21 (Cable < 21.0mm)
C146 VN16 290 0002
 Trumpet Strain Relief, PG29 (Cable < 30.0mm)



C146 VN16 210 0014
 Gland Bush C/W Seal, PG21 (Cable 11.0 – 22.0mm)
C146 VN16 290 0014
 Gland Bush C/W Seal, PG29 (Cable 19.0 – 31.0mm)



C146 10Z 024 1001
 Protective Cover, 4 Stud
W 44 L 123 D 20



C146 10G 024 6001
 Top Entry Hood, PG21, 4 Stud **W 43 L 120 D 62**



C146 10G 024 6011
 Top Entry Hood, PG29, 4 Stud **W 43 L 120 D 62**



C146 10G 024 5011
 Side Entry Hood, PG29, 4 Stud
W 43 L 120 D 62



C146 10G 024 8028
 Cable Mount Base, PG21, 2 Lever
W 43 L 94 D 62



C146 10F 024 0001
 Surface Mount Base, Open, 2 Lever
W 43 L 140 D 29



C146 10F 024 5001
 Surface Mount Base, Enclosed, 2 Lever,
 1 x PG21, Side Entry
W 57 L 144 D 64

Other non C146 series accessories available:



GPG21SUP
 Nylon Gland PG21 C/W Pigtail Support
 (Cable 10.0 – 17.5mm)



GPG21
 Nylon Gland PG21 (Cable 10.0 – 17.5mm)

GPG29
 Nylon Gland PG29 (Cable 16.0 – 24.0mm)

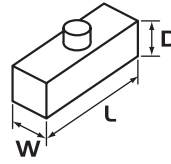
Firstflex has taken every precaution to ensure accurate information in this catalogue, but accept no liability for any errors or omissions. Firstflex reserves the right to modify specifications at any time.

AMPHENOL PLUGS & CONNECTORS

C146 SERIES

Heavy Duty Amphenol Multi-Pole Power Connectors ALUMINIUM 48P + E
1 Lever, 16 Amp 400V

Sizes in mm



APPLICATIONS:

Lighting & Entertainment For multiple control connections on stages and movie sets.

Medical Industry Suitable for medical devices and test equipment with a threaded collar to prevent accidental uncoupling.

Industrial Connectors Suitable for use on industrial machines and controls, data processing and instrumentation.

PRODUCT FEATURES:

- ▶ Heavy duty alloy body & base
- ▶ One lever (steel) locking mechanism to avoid disconnection
- ▶ IP65 when mated / IP53 for spring loaded hoods

CONSTRUCTION:

Body & Base Aluminium die cast alloy.

Insert Thermoplastic with silver plated contacts 48 Pole + Earth 16A 400V.

Screw Terminal 0.5 – 6.0mm².

Lever Single mild steel.

CHARACTERISTICS:

Operating Temperature Range -40°C to +125°C.

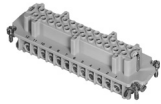
Protection Class IP65 when mated / IP53 for spring loaded hoods.

Relevant Standards DIN VDE 0110, IEC60664, IEC 60529, UL-E63093, CSA-48932.



C146 10A 024 1021

Male Insert Screw Terminal #1–24
W 27 L 104 D 31



C146 10B 024 1021

Female Insert Screw Terminal #1–24
W 27 L 104 D 32



C146 10G 048 5071

Side Entry Hood PG36, 2 Stud
W 90 L 132 D 105



C146 10F 048 0031

Surface Mount Base, Open, 1 Lever,
 C/W Dust Cover
W 90 L 165 D 43

Other non C146 series accessories available:



GPG36

Nylon Gland PG36 (Cable 18.0 – 31.0mm)

GPG29

Nylon Gland PG29 (Cable 16.0 – 24.0mm)

Firstflex has taken every precaution to ensure accurate information in this catalogue, but accept no liability for any errors or omissions. Firstflex reserves the right to modify specifications at any time.

PL SERIES

Connectors for Single Core Cables to 150mm²

APPLICATIONS:

Temporary Power Supply Suitable for use for temporary power connections in the entertainment industry and industrial sites.

Mining With the ability to daisy chain and extend single core flexible cables, these connectors are suitable for mine pit extensions.

PRODUCT FEATURES:

- ▶ Current rating 500 Amp @ 70°C (800 Amp available on request)
- ▶ Super high impact flame retardant thermoplastic insulators
- ▶ Individually keyed and colour coded to eliminate accidental cross mating
- ▶ Secondary locking pin to prevent unintentional uncoupling through cable torsion
- ▶ Multi contact with 23 spring loaded active elements to allow low insertion force
- ▶ Minimal power loss with insulation resistance > 5 ohms @ 500 V DC
- ▶ Protective caps & IP environmental dustcaps available on request
- ▶ CE Directive

CONSTRUCTION:

Super high impact flame retardant thermoplastic insulators. Each connector type colour coded and individually keyed to eliminate the possibility of accidental cross mating. Secondary locking pin to prevent unintentional uncoupling through cable torsion or inquisitive hands. Multipoint contact with 23 spring loaded active elements to allow low insertion force and minimal power loss with insulation resistance > 5 ohms @ 500 V DC.

CHARACTERISTICS:

Operating Temperature Range -30°C to 125°C.

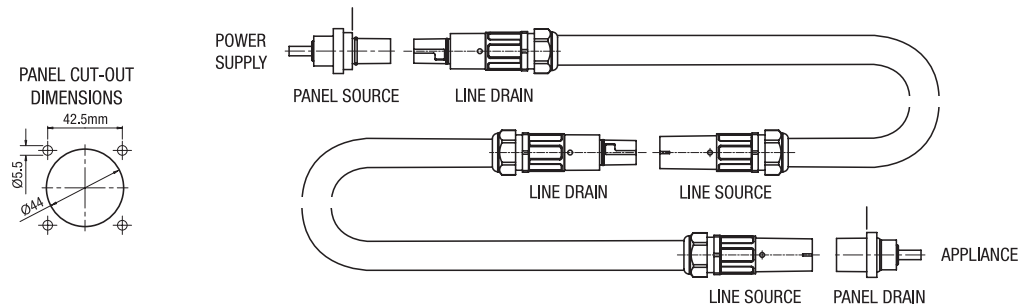
Flammability UL94 - V0.

Protection Class

Ingress IP67 (when mated) in accordance with EN60529.

Electric Shock IP2X with dead front insulated tip on contact element on items designated PANEL SOURCE and LINE SOURCE.

Max Rated Voltage to Earth 2kV AC / 3kV DC.



Line Source

Code	Colour
PLLSRD	Red
PLLSWH	White
PLLSBL	Blue
PLLSBK	Black
PLLSGN	Green



Panel Source

Code	Colour
PLPSRD	Red
PLPSWH	White
PLPSBL	Blue
PLPSBK	Black
PLPSGN	Green



Line Drain

Code	Colour
PLLDRD	Red
PLLDWH	White
PLLDBL	Blue
PLLDBK	Black
PLLDGN	Green



Panel Drain

Code	Colour
PLPDRD	Red
PLPDWH	White
PLPDBL	Blue
PLPDBK	Black
PLPDGN	Green



Firstflex has taken every precaution to ensure accurate information in this catalogue, but accept no liability for any errors or omissions. Firstflex reserves the right to modify specifications at any time.



ON ALL FIRSTFLEX STOCKED CABLES

YES - THAT MEANS FROM 0.22mm² TO 630mm²

