

## C146 SERIES

Heavy Duty Amphenol Multi-Pole Power Connectors ALUMINIUM 6P + E  
2 Lever, 42 Amp 400V

### APPLICATIONS:

- Lighting & Entertainment** For multiple control connections on stages and movie sets.
- Medical Industry** Suitable for medical devices and test equipment with a threaded collar to prevent accidental uncoupling.
- Industrial Connectors** Suitable for use on industrial machines and controls, data processing and instrumentation.

### PRODUCT FEATURES:

- ▶ Heavy duty alloy body & base
- ▶ Two lever (steel) locking mechanism to avoid disconnection
- ▶ IP65 when mated / IP53 for spring loaded hoods



**C146 10A 006 1025**  
Male Insert Screw Terminal  
W 34 L 85 D 34



**C146 10B 006 1025**  
Female Insert Screw Terminal  
W 34 L 85 D 34



**C146 VN16 210 0002**  
Trumpet Strain Relief, PG21 (Cable < 21.0mm)  
**C146 VN16 290 0002**  
Trumpet Strain Relief, PG29 (Cable < 30.0mm)

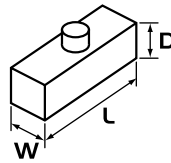


**C146 VN16 210 0014**  
Gland Bush C/W Seal, PG21 (Cable 11.0 – 22.0mm)  
**C146 VN16 290 0014**  
Gland Bush C/W Seal, PG29 (Cable 19.0 – 31.0mm)



**C146 10Z 016 1001**  
Protective Cover, 4 Stud  
W 44 L 97 D 20

Sizes in mm



### CONSTRUCTION:

- Body & Base** Aluminium die cast alloy.
- Insert** Thermoplastic with wire protection & silver plated contacts
- 6 Pole + Earth 42A 400V.
- Screw Terminal** 0.5 – 6.0mm<sup>2</sup>.
- Lever** Double mild steel.

### CHARACTERISTICS:

- Operating Temperature Range** -40°C to +125°C.
- Protection Class** IP65 when mated / IP53 for spring loaded hoods.
- Relevant Standards** DIN VDE 0110, IEC 60664, IEC 60529, UL-E63093, CSA-48932.



**C146 10G 016 6001**  
Top Entry Hood, PG21, 4 Stud W 43 L 94 D 62



**C146 10G 016 6011**  
Top Entry Hood, PG29, 4 Stud W 43 L 94 D 62



**C146 10G 016 5001**  
Side Entry Hood, PG21, 4 Stud  
W 43 L 94 D 62



**C146 10G 016 8021**  
Cable Mount Base, PG21, 2 Lever W 43 L 94 D 62



**C146 10G 016 8038**  
Cable Mount Base, PG29, 2 Lever W 43 L 94 D 76



**C146 10G 016 6021**  
Cable Mount Base, PG21, 2 Lever, No Gasket  
(Suit C146 10F 016 0021)  
W 43 L 94 D 62



**C146 10F 016 0001**  
Surface Mount Base, Open, 2 Lever  
W 43 L 113 D 29



**C146 10F 016 0021**  
Surface Mount Base, Open, 4 Stud Only, No Levers  
C/W Dust Cover (Suit C146 10G 016 6021)  
W 43 L 113 D 29



**C146 10F 016 5001**  
Surface Mount Base, Enclosed, 2 Lever,  
1 x PG21 Side Entry  
W 57 L 117 D 64

Other non C146 series accessories available:



**GPG21SUP**  
Nylon Gland PG21 C/W Pigtail Support  
(Cable 10.0 – 17.5mm)



**GPG21**  
Nylon Gland PG21 (Cable 10.0 – 17.5mm)

**GPG29**  
Nylon Gland PG29 (Cable 16.0 – 24.0mm)

Firstflex has taken every precaution to ensure accurate information in this catalogue, but accept no liability for any errors or omissions. Firstflex reserves the right to modify specifications at any time.