

## C146 SERIES

Heavy Duty Amphenol Multi-Pole Power Connectors ALUMINIUM 6P + E  
1 Lever, 16 Amp 400V

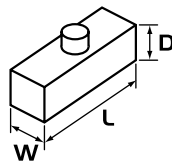
### APPLICATIONS:

- Lighting & Entertainment** For multiple control connections on stages and movie sets.
- Medical Industry** Suitable for medical devices and test equipment with a threaded collar to prevent accidental uncoupling.
- Industrial Connectors** Suitable for use on industrial machines and controls, data processing and instrumentation.

### PRODUCT FEATURES:

- ▶ Heavy duty alloy body & base
- ▶ One lever (steel) locking mechanism to avoid disconnection
- ▶ IP65 when mated / IP53 for spring loaded hoods

Sizes in mm



### CONSTRUCTION:

- Body & Base** Aluminium die cast alloy.
- Insert** Thermoplastic with wire protection & silver plated contacts
- 6 Pole + Earth 16A 400V.
- Screw Terminal** 0.5 – 6.0mm<sup>2</sup>.
- Lever** Single mild steel.

### CHARACTERISTICS:

- Operating Temperature Range** -40°C to +125°C.
- Protection Class** IP65 when mated / IP53 for spring loaded hoods.
- Relevant Standards** DIN VDE 0110, IEC 60664, IEC 60529, UL-E63093, CSA-48932.



**C146 10A 006 1021**  
Male Insert Screw Terminal  
W 27 L 44 D 31



**C146 10B 006 1021**  
Female Insert Screw Terminal  
W 27 L 44 D 32



**C146 VN16 135 0002**  
Trumpet Strain Relief, PG13.5 (Cable < 14.0mm)  
**C146 VN16 160 0002**  
Trumpet Strain Relief, PG16 (Cable < 16.0mm)



**C146 VN16 135 0014**  
Gland Bush C/W Seal, PG13.5 (Cable 7.0 – 15.0mm)  
**C146 VN16 160 0014**  
Gland Bush C/W Seal, PG16 (Cable 8.0 – 16.0mm)



**C146 10G 006 5001**  
Side Entry Hood PG13.5, 2 Stud W 43 L 50 D 61  
**C146 10G 006 5011**  
Side Entry Hood PG16, 2 Stud W 43 L 50 D 61



**C146 10G 006 6001**  
Top Entry Hood PG13.5, 2 Stud W 43 L 50 D 61  
**C146 10G 006 6011**  
Top Entry Hood PG16, 2 Stud W 43 L 50 D 61



**C146 10G 006 8041**  
Cable Mount Base PG13.5, 1 Lever W 43 L 50 D 62  
**C146 10G 006 8051**  
Cable Mount Base PG16, 1 Lever W 43 L 50 D 62



**C146 10F 006 0001**  
Surface Mount Base,  
Open, 1 Lever  
W 43 L 80 D 29



**C146 10F 006 0031**  
Surface Mount Base Enclosed Open, 1 Lever,  
C/W Dust Cover  
W 43 L 80 D 29



**C146 10F 006 5001**  
Surface Mount Base Enclosed, 1 Lever,  
1 x PG16 Side Entry  
W 54 L 84 D 54



**C146 10F 006 8061**  
Surface Mount Base Enclosed, 1 Lever,  
1 x PG16 Side Entry, C/W Dust Cover  
W 54 L 84 D 54

Other non C146 series accessories available:



**GPG13.5SUP**  
Nylon Gland PG13.5 C/W Pigtail Support (Cable 5.0 – 12.5mm)  
**GPG16SUP**  
Nylon Gland PG16 C/W Pigtail Support (Cable 6.0 – 14.0mm)



**GPG13.5**  
Nylon Gland PG13.5 (Cable 5.0 – 12.5mm)  
**GPG16**  
Nylon Gland PG16 (Cable 6.0 – 14.0mm)

Firstflex has taken every precaution to ensure accurate information in this catalogue, but accept no liability for any errors or omissions. Firstflex reserves the right to modify specifications at any time.