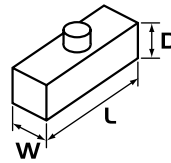


AMPHENOL PLUGS & CONNECTORS

C146 SERIES

Heavy Duty Amphenol Multi-Pole Power Connectors ALUMINIUM 48P + E
1 Lever, 16 Amp 400V

Sizes in mm



APPLICATIONS:

Lighting & Entertainment For multiple control connections on stages and movie sets.

Medical Industry Suitable for medical devices and test equipment with a threaded collar to prevent accidental uncoupling.

Industrial Connectors Suitable for use on industrial machines and controls, data processing and instrumentation.

PRODUCT FEATURES:

- ▶ Heavy duty alloy body & base
- ▶ One lever (steel) locking mechanism to avoid disconnection
- ▶ IP65 when mated / IP53 for spring loaded hoods

CONSTRUCTION:

Body & Base Aluminium die cast alloy.

Insert Thermoplastic with silver plated contacts 48 Pole + Earth 16A 400V.

Screw Terminal 0.5 – 6.0mm².

Lever Single mild steel.

CHARACTERISTICS:

Operating Temperature Range -40°C to +125°C.

Protection Class IP65 when mated / IP53 for spring loaded hoods.

Relevant Standards DIN VDE 0110, IEC60664, IEC 60529, UL-E63093, CSA-48932.



C146 10A 024 1021

Male Insert Screw Terminal #1–24
W 27 L 104 D 31



C146 10B 024 1021

Female Insert Screw Terminal #1–24
W 27 L 104 D 32



C146 10G 048 5071

Side Entry Hood PG36, 2 Stud
W 90 L 132 D 105



C146 10F 048 0031

Surface Mount Base, Open, 1 Lever,
 C/W Dust Cover
W 90 L 165 D 43

Other non C146 series accessories available:



GPG36

Nylon Gland PG36 (Cable 18.0 – 31.0mm)

GPG29

Nylon Gland PG29 (Cable 16.0 – 24.0mm)

Firstflex has taken every precaution to ensure accurate information in this catalogue, but accept no liability for any errors or omissions. Firstflex reserves the right to modify specifications at any time.