



DOOR SWITCHES, FOOT SWITCHES AND KWH METERS

Cupboard Door Switches.....	250
Foot Switch.....	251
Kilowatt Hour Meters.....	252





Cupboard Door Switches

- ▶ They have been architecturally designed for aesthetic appeal
- ▶ The screw heads are hidden by the caps supplied and camouflaged by attractive “star” embossing
- ▶ No manufacturer logotype imprints
- ▶ Easy screw terminations
- ▶ Pack includes spare block for sliding door applications
- ▶ Minimal size at just 55mm x 40mm x 25mm
- ▶ Unobtrusive in the home environment



Button Type - Cupboard Door Switch

Code: DSB



Lever Type - Cupboard Door Switch

Code: DSL



CUPBOARD DOOR SWITCH

ARM MAY BE BENT FOR ADJUSTMENT

Pack Contains:
 1 Cupboard Door Switch, 1 Switch Cover,
 1 Mounting Block, Two Screws
 and Screw Caps

Both suitable for hinged or sliding doors



DOOR SWITCHES & DOOR MINDERS

Foot Switch

Minimise employee safety risks and improve machine performance.
Foot switches can be used to turn electrical equipment on and off with the foot.

PRODUCT FEATURES:

- ▶ Made from robust cast aluminium construction, ensuring longevity
- ▶ Powder Coated finish
- ▶ 85mm entry for steel capped boots
- ▶ Can be screwed to floor or placed for convenience
- ▶ Features gaskets and seals to prevent fluid intrusion
- ▶ Comes complete with entry gland
- ▶ 10 Amp 230 volt / 5 Amp 400 volt.
- ▶ IP65



Code: FS10D

Kilowatt Hour Meters

DEMO15 - Single phase DIN-rail watt-hour meter

A new kind of single phase electronic watt-hour meter that uses micro-electronic techniques to accurately and directly measure 50Hz or 60Hz active energy consumption from a single phase AC electricity network. Displays energy consumption by step type impulse register.



PRODUCT FEATURES:

- ▶ 35mm standard DIN rail installation, complying with standard DIN EN5002
- ▶ 18mm width, complying with standard DIN43880
- ▶ 5 + 1 digits display (99999.1 kWh)
- ▶ Analogue display for visibility in sunlight
- ▶ Impulse output
- ▶ Wire size: 6mm²

Code: DEMO15

TECHNICAL PARAMETERS:

Accuracy	Class 1
Rated Voltage	230V
Rated Current	32A
Starting Current	0.4% Ib
Insulation Performance	AC voltage 2kV for 1 minute impulse voltage 6kV

DEMO11 - Single phase electronic watt-hour meter

A new style of single phase electronic watt-hour meter that uses micro-electronics techniques to accurately and directly measure 50Hz or 60Hz active energy consumption from a single phase AC electricity network. Displays energy consumption by step type impulse register. Requires neutral to be part of load circuit.



PRODUCT FEATURES:

- ▶ 35mm standard DIN rail installation, complying with standard DIN EN5002
- ▶ LCD display
- ▶ Impulse output
- ▶ 75mm wide
- ▶ Wire size: 25mm²

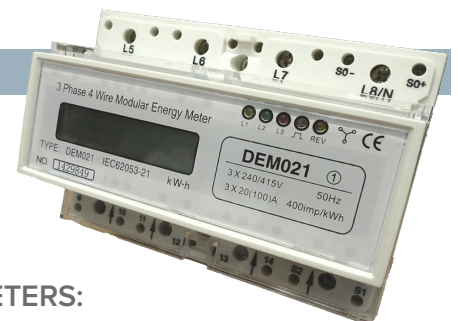
Code: DEMO11

TECHNICAL PARAMETERS:

Accuracy	Class 1
Rated Voltage	230V
Rated Current	100A
Starting Current	0.4% Ib
Insulation Performance	AC voltage 2kV for 1 minute impulse voltage 6kV

DEMO21 - Three phase electronic watt-hour meter

A new style of three phase electronic watt-hour meter that accurately and directly measures active energy consumption from three phase AC electricity network. Displays energy consumption by step type impulse register.



PRODUCT FEATURES:

- ▶ 35mm standard DIN rail installation, complying with standard DIN EN5002
- ▶ LCD display
- ▶ Impulse output
- ▶ 125mm wide
- ▶ Wire size: 25mm²

Code: DEMO21

TECHNICAL PARAMETERS:

Accuracy	Class 1
Rated Voltage	3x230V/400V
Rated Current	3 x 100A
Starting Current	0.4% Ib
Insulation Performance	AC voltage 2kV for 1 minute impulse voltage 6kV

Firstflex has taken every precaution to ensure accurate information in this catalogue, but accept no liability for any errors or omissions. Firstflex reserves the right to modify specifications at any time.