



HARDWARE

Catenary Products	224
Catenary Wire Accessories	225
YC Hole Cutter	226
Meter Boxes.....	227
PVC Switchboard Panels	228
Aluminium Extrusion DIN Rail	229
Extruded PVC Gasket.....	229
Flush Boxes.....	230
Terminal Strips	231
Earth Tags	231
Danger Signs	232
Danger Labels	232
Warning Tape.....	233





Catenary Products



Catwire PL/COV 2.6 X 5KG

Code: **CATWIR52 (Green)** / **CATWIR52W (White)**

Green	Outside diameter 2.6mm
Standard	JIS.G3532.SWM.G1
Core Size	2.03mm diameter
Coating	Rigid PVC
Wire	Iron wire
Breaking Load	123 - 162kg
Roll Size	Nominal - 5.0kg (190m)



Catwire PL/COV 3.2 X 5KG

Code: **CATWIR53 (Black)** / **CATWIR53RED (Red)**

Black or Red	Outside diameter 3.2mm
Standard	JIS.G3532.SWM.G1
Core Size	2.80mm diameter
Coating	Rigid PVC
Wire	Iron wire
Breaking Load	228 - 265kg
Roll Size	Nominal - 5.0kg (100m)



If you use catwire often, here's just what you need to make the work easier,
THE ELECTREX CATWIRE CAROUSEL!



Catwire Carousel

Code: **CATCAR**

Size	Approx. overall dimensions: 500mm x 500mm x 315mm
Load Capacity	Holds 5kg rolls of Electrex catenary wire
Colour/Coating	Red, Powdercoated

HARDWARE



Catenary Wire Accessories



Eye Bolt
Includes nut & washer.
¼ inch x 100mm.
25 per bag.
Code: EYEBOL



Screwed Hole
6mm hole.
5mm x 70mm long.
100 per bag.
Code: SCRHOL



Coach Eye
6mm x 75mm.
Zinc plated.
50 per bag.
Code: COAEYE



Maxi Hook
4mm x 70mm long.
50 per bag.
Code: MHOOK



Mega Hook
6mm x 100mm long.
25 per bag.
Code: MH100



"S" Hook
4mm dia. x 35mm.
25 per bag.
Code: SHOOK



D Shackle
5mm.
Galvanised.
Code: DSHACK



Wire Grip/Clamp
3mm.
Code: GRIP3



Ratchet Tensioner
Code: H302



Hook and Eye Turnbuckle
M5: Range 100 - 150mm.
Code: TUR5
M6: Range 140 - 215mm.
Code: TUR6
M8: Range 160 - 235mm.
Code: TUR8
M10: Range 140 - 190mm.
Code: TUR10



Open Link Chain
Bright zinc plated.
Link: 32mm x 12mm wide
x 2.5mm diameter.
Max break load: 15kg.
25 metre bag.
Code: CHOL



Welded Link Chain
Bright zinc plated.
Link: 25mm x 11mm wide
x 3mm diameter.
Max break load: 37kg.
10 metre bag.
Code: CHWL



Bulk Welded Link Chain
Bright zinc plated.
Link: 25mm x 11mm
x 3mm diameter.
Max break load: 37kg
50kg drum - approx
300 metres.
Code: CHWLB

Firstflex has taken every precaution to ensure accurate information in this catalogue, but accept no liability for any errors or omissions. Firstflex reserves the right to modify specifications at any time.



Meter Boxes with Flashing

Manufactured locally, with materials that provide excellent mechanical, thermal and electrical properties. The rust proof construction is particularly suitable in New Zealand's highly corrosive coastal environments.

Meter Box - Double Window

- ▶ Size: 600mm high x 400mm wide x 210mm deep
- ▶ Flammability test UL 94 HB
- ▶ Surface or flush mountable
- ▶ Flashing kit included for weather tightness
- ▶ 15mm foamed PVC sheet backboard for front wiring and easy mounting of components
- ▶ IPX4

Code: MGB1



Meter Box - Single Window

- ▶ Size: 400mm x 400mm x 175mm
- ▶ Flammability test UL94 V0
- ▶ Surface or flush mountable
- ▶ Flashing kit included for weather tightness

Code: MGB2



Frame to fit meter box

Apply weather proofing

Seal corners

Fix meter box in place

Fix flashing

Seal flashing

Ready for wiring

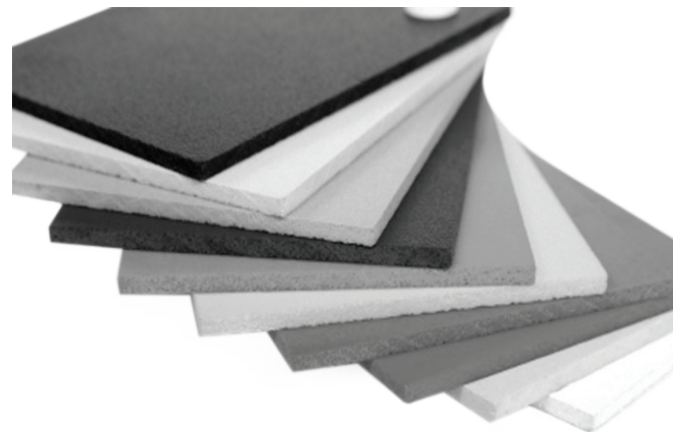
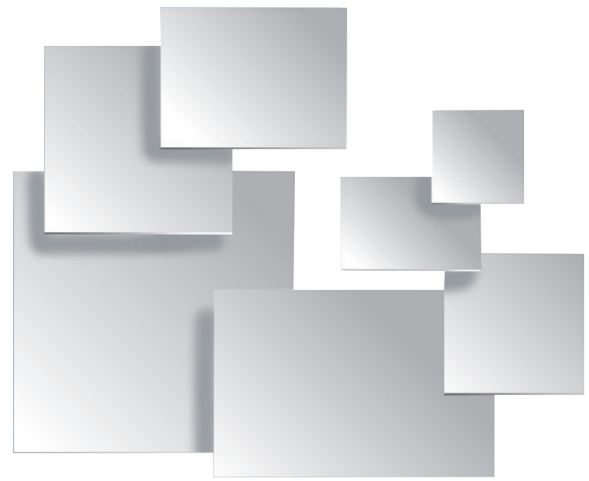
Firstflex has taken every precaution to ensure accurate information in this catalogue, but accept no liability for any errors or omissions. Firstflex reserves the right to modify specifications at any time.



PVC Switchboard Panels

- ▶ All PVC panels are self extinguishing and made from flame retardant materials.
- ▶ Different thicknesses available, ranging from 2mm (clear & white only) 3mm, 4.5mm, 6mm and 10mm (grey or white) panels cut to size and available upon request.
- ▶ Formica panels available on request.

PVC Switchboard Panels		
Code	Description	
PP300 x 300	PVC	300mm x 300mm x 4.5mm
PP450 x 300	PVC	450mm x 300mm x 4.5mm
PP450 x 450	PVC	450mm x 450mm x 4.5mm
PP600 x 450	PVC	600mm x 450mm x 6mm
PP600 x 600	PVC	600mm x 600mm x 6mm
PP900 x 600	PVC	900mm x 600mm x 6mm
PP900 x 900	PVC	900mm x 900mm x 6mm
PPM1	PVC M1	555mm x 360mm x 4.5mm
PPM2	PVC M2	555mm x 555mm x 4.5mm



We can supply
**SPECIAL
 CUT-TO-SIZE**
 panels at your request.
 And QUICKLY too!

Whatever your
 customer requirements, call us
 for PVC Switchboard Panels.

Aluminium Extrusion DIN Rail

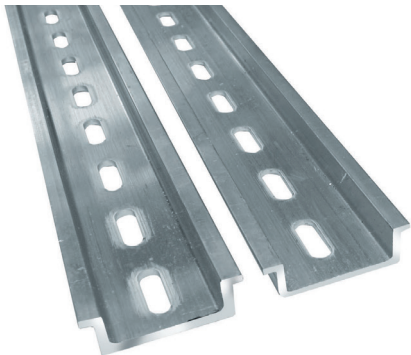
Standard section includes slotted mounting holes.
Slotted mounting holes are -
6.3mm (W) x 18mm (L) @ 25mm centres.

EXTRUSION PROFILES

Standard - 10mm deep with 1.7mm wall thickness.

Heavy Duty - 10mm deep with 2mm wall for strength.

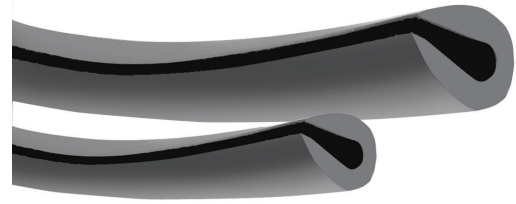
Low Profile - 7.2mm deep with 1.5mm wall thickness.



Aluminium Extrusion DIN Rail

Code	Description
ALD1P	Standard, 1m, Punched
ALD2P	Standard, 2m, Punched
ALD3P	Standard, 3m, Punched
ALDP1HD	Heavy Duty, 1m, Punched
ALDP2HD	Heavy Duty, 2m, Punched
ALDP3HD	Heavy Duty, 3m, Punched
ALD1PL	Low Profile, 1m, Punched

Extruded PVC Gasket



Extruded PVC Gasket

Code	Size		
GASS (Small)	5mm H	2mm T	10m L
GASL (Large)	8mm H	3.5mm T	10m L

Metal Flush Boxes

In many structures it is often required that electrical and plumbing fittings be located in or on fire resistant walls. Metal flush boxes are fire rated and can be used for this requirement.

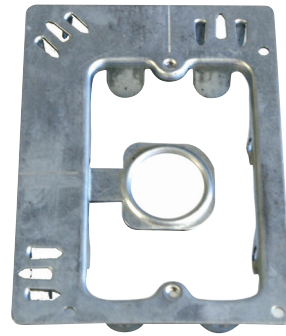


Single Metal Flush Box

Size: 97 x 54 x 51mm

Packed in cartons of 50

Code: **FBMSA**

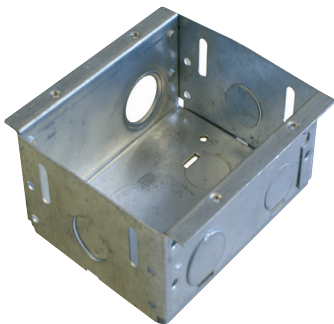


Open Plate Flush Box

Size: 119 x 87mm

Packed in cartons of 100

Code: **FBMO**



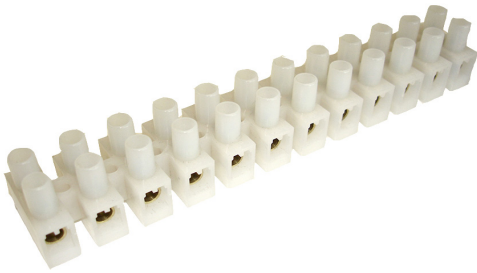
Double Metal Flush Box

Size: 97 x 75 x 47mm

Packed in cartons of 10

Code: **FBMD**

Terminal Strips



Code	Amps	Max Cable Size	Pack Size
815.1361	3 Amp	2.5mm	10 Pack
815.1362	6 Amp	4mm	10 Pack
815.1363	10 Amp	6mm	10 Pack
815.1364	20 Amp	10mm	10 Pack
815.1367	30 Amp	12mm	10 Pack
815.1365	80 Amp	16mm	10 Pack
815.1366	100 Amp	25mm	10 Pack

Earth Tags



Mains Earth Tag

- ▶ Packed in bags of 50 **“MAIN EARTH CONDUCTOR DO NOT DISCONNECT”**

Code: ETAGMAIN Green



Copper Earth Tag

- ▶ Packed in bags of 50 **“EARTHING CONDUCTOR DO NOT DISCONNECT”**
- ▶ Fixes onto earth wire

Code: ETAGC Copper



Plastic Earth Tag

- ▶ Packed in bags of 50 **“EARTHING CONDUCTOR DO NOT DISCONNECT”**

Code: ETAGPR Red

Code: ETAGPG Green

Code: ETAGPM Red & Green Mix

Danger Signs

PRODUCT FEATURES

- ▶ DANGER signs are printed on rigid plastic.
- ▶ Slotted for banding to poles, screw holes for wall attachment
- ▶ Choice of arrow up, down, horizontal or combination mix
- ▶ Double sided and also available as self-adhesive labels

DANGER Signs		
Code	Description	Order Mix
DSMIX	2 sided	Each sheet of 5: 5 x A 3 x B 2 x C
DSHOR	2 sided	A and C

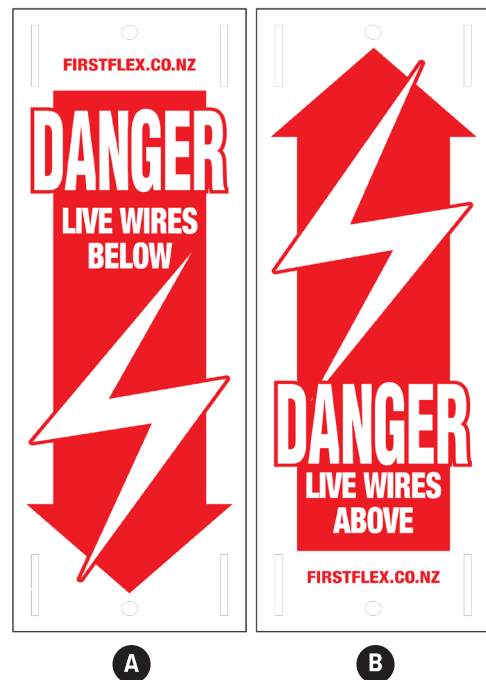


Danger Labels

PRODUCT FEATURES

- ▶ DANGER labels are silk screened onto self adhesive vinyl (sticker)
- ▶ Ready to be stuck in place
- ▶ Choice of arrow up or down
- ▶ Single sided red on white gloss

DANGER Labels		
Code	Description	Order Mix
DLDOWN	Arrow down	A only
DLUP	Arrow up	B only





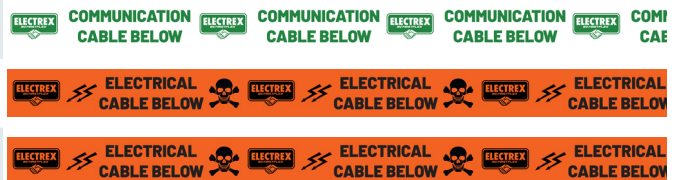
Warning Tape

Electrical Wire Warning Tape must be used to identify a cable buried in the ground. Our tapes compliance to AS/NZS 2648.1 ensures that underground warning tape will survive in New Zealand's harsh acidic soil environment.

Standard rolls available ex-stock or custom designed tape can be made to order. MOQ's will apply + artwork setup and plate fees for custom orders.



Warning Tape - Below Ground		
Barrier Tape	Description	Colour
WCOM300W	Communication Cable Below	White/Green
WW100	Electrical Cable Below - 100m	Orange/Black
WW300	Electrical Cable Below - 300m	Orange/Black



Firstflex has taken every precaution to ensure accurate information in this catalogue, but accept no liability for any errors or omissions. Firstflex reserves the right to modify specifications at any time.



ON ALL FIRSTFLEX STOCKED CABLES

YES - THAT MEANS FROM 0.22mm² TO 630mm²

