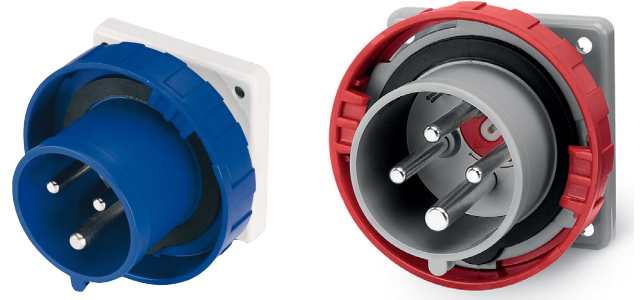
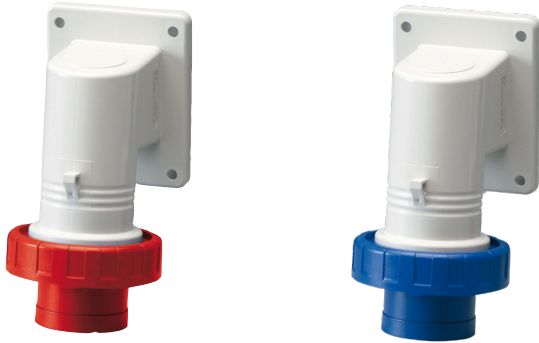


SCAME Appliance Inlets



IP67 Surface Mounting Appliance Inlets

Code	Rating	Pins	Earth Position
240v BLUE			
247.1693	16 Amp	2 P + E	6H
247.3293	32 Amp	2 P + E	6H
248.6393	63 Amp	2 P + E	6H Panel Mounting
248.12593	125 Amp	2 P + E	6H Panel Mounting
415v RED			
247.1696	16 Amp	3 P + E	6H
247.1697	16 Amp	3 P + N + E	6H
247.3296	32 Amp	3 P + E	6H
247.3297	32 Amp	3 P + N + E	6H

See over the page for more Technical information



Cap for IP67 Inlets

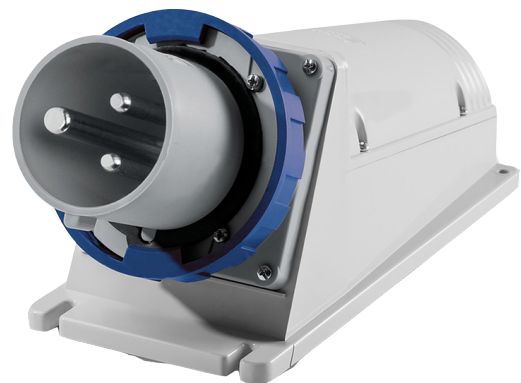
Code	Rating	Pins
570.90164	16 Amp	3 P + E
570.90324	32 Amp	3 P + E
570.90325	32 Amp	3 P + N + E
570.9063	63 Amp	3 P + N + E
570.9125	125 Amp	3 P + N + E

Flush Mounting Appliance Inlets

Code	Rating	Pins	Earth Position
240v BLUE			
248.1693	16 Amp	2 P + E	6H (with cap)
248.3293	32 Amp	2 P + E	6H
415v RED			
248.1696RV	16 Amp	3 P + E	6H
248.3296RV	32 Amp	3 P + E	6H
248.1697RV	16 Amp	3 P + N + E	6H
248.3297RV	32 Amp	3 P + N + E	6H
248.6396	63 Amp	3 P + E	6H Panel Mounting
248.6397	63 Amp	3 P + N + E	6H Panel Mounting
248.12596	125 Amp	3 P + E	6H Panel Mounting
248.12597	125 Amp	3 P + N + E	6H Panel Mounting
570.0132	32 Amp	Mounting Box	Angle
570.0163	63 Amp	Mounting Box	Angle
570.0125	125 Amp	Mounting Box	Angle

Fittings 63 Amp and above have Pilot Pin

Panel Mounting Inlets require a Mounting Box



International Industrial Standard IEC60309-CEE17

Firstflex has taken every precaution to ensure accurate information in this catalogue, but accept no liability for any errors or omissions. Firstflex reserves the right to modify specifications at any time.