



SCAME PLUGS, CONNECTORS & ENCLOSURES

SCAME Plugs	192
SCAME Connectors	193
SCAME Socket Outlets	194
SCAME Appliance Inlets	195
Plug with Phase Inverters	196
Interlocked Switch Socket Outlets	197
Emergency Changeover Switch	199
Surface Mounting Junction Boxes	200
Domino System	
Modular Enclosures IP66	201
Switches & Accessories	203
Domestic Outlets	203
Distribution Assemblies for Construction Sites	204



SCAME PLUGS, CONNECTORS & ENCLOSURES



SCAME Plugs



Socket Front View



IP67 OPTIMA Plug

Code	Rating	Pins	Earth Position
110v YELLOW			
218.1630	16 Amp	2 P + E	4H
240v BLUE			
218.1633PTR	16 Amp	2 P + E	6H Ins. Perforation
218.1633TR	16 Amp	2 P + E	6H
226.1633	16 Amp	2 P + E	6H (Right Angle)
218.3233	32 Amp	2 P + E	6H
218.6333	63 Amp	2 P + E	6H
415v RED			
218.1636P	16 Amp	3 P + E	6H Ins. Perforation
218.1637P	16 Amp	3 P + N + E	6H Ins. Perforation
218.3236	32 Amp	3 P + E	6H
218.32364	32 Amp	3 P + E	3H* (Reefer)
218.3237	32 Amp	3 P + N + E	6H
218.6336	63 Amp	3 P + E	6H
218.6337	63 Amp	3 P + N + E	6H
218.12536	125 Amp	3 P + E	6H
218.12537	125 Amp	3 P + N + E	6H

* 3H = Refrigerated Container

Fittings 63 Amp and above have Pilot Pin and are IP67 Rated

IP44 OPTIMA Plug

Code	Rating	Pins	Earth Position
240v BLUE			
213.1633PTR	16 Amp	2 P + E	6H Ins. Perforation
213.1633TR	16 Amp	2 P + E	6H
213.3233	32 Amp	2 P + E	6H
415v RED			
213.1636P	16 Amp	3 P + E	6H Ins. Perforation
213.1638	16 Amp	2 P + E	9H
213.3236	32 Amp	3 P + E	6H
213.3237	32 Amp	3 P + N + E	6H



IP44 Angled Plug

Code	Rating	Pins	Earth Position
221.1633	16 Amp	2 P + E	6H

International Industrial Standard IEC60309-CEE17

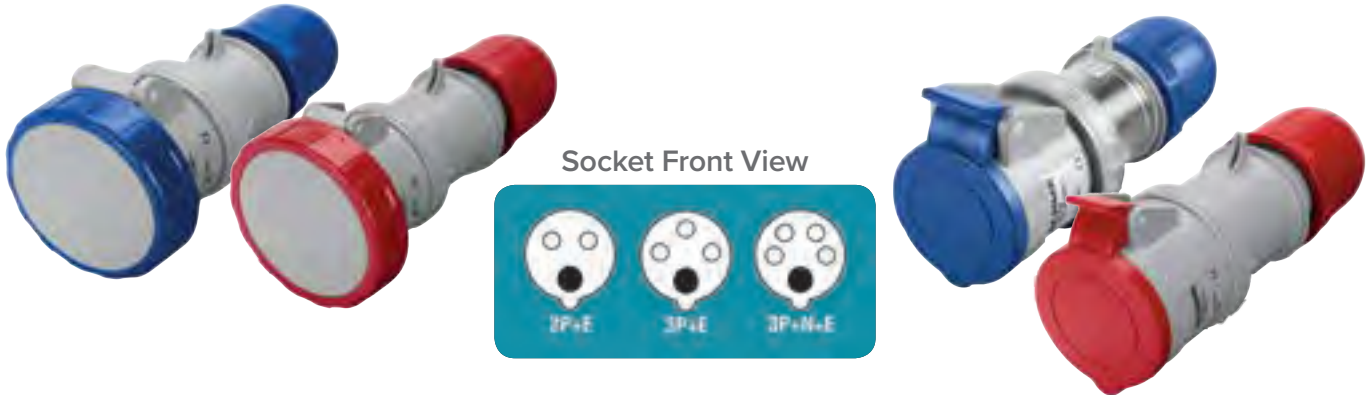
Wiring and Installation

Rated Voltage	WIRING CAPACITY OF TERMINALS (mm ²)					MAX. CABLE SIZE ACCEPTED BY CABLE CLAMP		
	Rated Voltage (A)	Plugs, Connectors and Appliance Inlets		Socket Outlets		Rated Current (A)	Outside ϕ mm	
		Min	Max	Min	Max		Min	Max
Over 50V	16A	1	2.5	1.5	4	16A	8	15
	32A	2.5	6	2.5	10	32A	11.5	21
	63A	6	16	6	25	63A	17	31
	125A	16	50	25	70	125A	26	48

Firstflex has taken every precaution to ensure accurate information in this catalogue, but accept no liability for any errors or omissions. Firstflex reserves the right to modify specifications at any time.

SCAME PLUGS, CONNECTORS & ENCLOSURES

SCAME Connectors



IP67 OPTIMA Connector

Code	Rating	Pins	Earth Position
110v YELLOW			
318.1640	16 Amp	2 P + E	4H
240v BLUE			
318.1643PTR	16 Amp	2 P + E	6H Ins. Perforation
318.1643TR	16 Amp	2 P + E	6H
326.1643	16 Amp	2 P + E	6H (Right Angle)
318.3243	32 Amp	2 P + E	6H
318.6343	63 Amp	2 P + E	6H
415v RED			
318.1646	16 Amp	3 P + E	6H
326.1646	16 Amp	3 P + E	6H (Right Angle)
318.1647	16 Amp	3 P + N + E	6H
318.3246	32 Amp	3 P + E	6H
318.32464	32 Amp	3 P + E	3H* (Reefer)
318.3247	32 Amp	3 P + N + E	6H
318.6346	63 Amp	3 P + E	6H
318.6347	63 Amp	3 P + N + E	6H
318.12546	125 Amp	3 P + E	6H
318.12547	125 Amp	3 P + N + E	6H

* 3H = Refrigerated Container

Fittings 63 Amp and above have Pilot Pin and are IP67 Rated

IP44 OPTIMA Connector

Code	Rating	Pins	Earth Position
240v BLUE			
313.1643PTR	16 Amp	2 P + E	6H Ins. Perforation
313.1643TR	16 Amp	2 P + E	6H
313.3243	32 Amp	2 P + E	6H
415v RED			
313.1646	16 Amp	3 P + E	6H
313.1647	16 Amp	3 P + N + E	6H
313.3246	32 Amp	3 P + E	6H



IP44 Angled Connector

Code	Rating	Pins	Earth Position
321.1643	16 Amp	2 P + E	6H

International Industrial Standard IEC60309-CEE17

Insulation Perforating Terminals - Fast Wiring

Insulation perforation saves up to 60% termination time.

Code Suffix: P or PTR



Screw Terminals - Conventional Wiring

Traditional Screw Terminations also available.



Firstflex has taken every precaution to ensure accurate information in this catalogue, but accept no liability for any errors or omissions. Firstflex reserves the right to modify specifications at any time.

SCAME Socket Outlets



Socket Front View



IP67 Socket Outlet

Code	Rating	Pins	Earth Position
110v YELLOW			
418.1660	16 Amp	2 P + E	4H
240v BLUE			
418.1663	16 Amp	2 P + E	6H
418.3263	32 Amp	2 P + E	6H
418.6363	63 Amp	2 P + E	6H
415v RED			
418.1666	16 Amp	3 P + E	6H
418.1667	16 Amp	3 P + N + E	6H
418.3266	32 Amp	3 P + E	6H
418.32664	32 Amp	3 P + E	3H* (Reefer)
427.3267	32 Amp	3 P + N + E	6H Reduced Base
418.3267	32 Amp	3 P + N + E	6H
418.6366	63 Amp	3 P + E	6H
418.6367	63 Amp	3 P + N + E	6H
418.12567	125 Amp	3 P + N + E	6H

* 3H = Refrigerated Container

Fittings 63 Amp and above have Pilot Pin and are IP67 Rated

IP44 Socket Outlet

Code	Rating	Pins	Earth Position
240v BLUE			
413.1663	16 Amp	2 P + E	6H
422.1663	16 Amp	2 P + E	6H Reduced Base
413.3263	32 Amp	2 P + E	6H

International Industrial Standard IEC60309-CEE17

Surface Mounting Junction Boxes

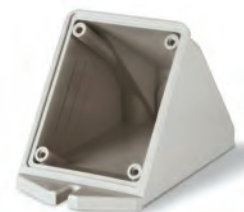
SCAME Straight Surface Box

570.0016	16 Amp
570.0032	32 Amp



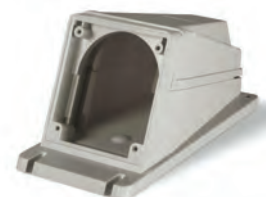
SCAME Angle Box

570.0116	16 Amp
570.0132	32 Amp



SCAME Surface Box

570.0163	63 Amp
570.0125	125 Amp



SCAME Appliance Inlets



IP67 Surface Mounting Appliance Inlets

Code	Rating	Pins	Earth Position
240v BLUE			
247.1693	16 Amp	2 P + E	6H
247.3293	32 Amp	2 P + E	6H
248.6393	63 Amp	2 P + E	6H Panel Mounting
248.12593	125 Amp	2 P + E	6H Panel Mounting
415v RED			
247.1696	16 Amp	3 P + E	6H
247.1697	16 Amp	3 P + N + E	6H
247.3296	32 Amp	3 P + E	6H
247.3297	32 Amp	3 P + N + E	6H
248.6396	63 Amp	3 P + E	6H Panel Mounting
248.6397	63 Amp	3 P + N + E	6H Panel Mounting
248.12596	125 Amp	3 P + E	6H Panel Mounting
248.12597	125 Amp	3 P + N + E	6H Panel Mounting
570.0132	32 Amp	Mounting Box	Angle
570.0163	63 Amp	Mounting Box	Angle
570.0125	125 Amp	Mounting Box	Angle

Fittings 63 Amp and above have Pilot Pin

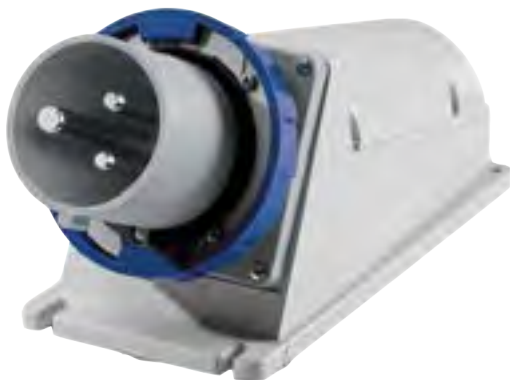
Flush Mounting Appliance Inlets

Code	Rating	Pins	Earth Position
240v BLUE			
248.1693	16 Amp	2 P + E	6H (with cap)
248.3293	32 Amp	2 P + E	6H
415v RED			
248.1696RV	16 Amp	3 P + E	6H
248.3296RV	32 Amp	3 P + E	6H
248.1697RV	16 Amp	3 P + N + E	6H
248.3297RV	32 Amp	3 P + N + E	6H

See over the page for more Technical information



Panel Mounting Inlets require a Mounting Box



Cap for IP67 Inlets

Code	Rating	Pins
570.90164	16 Amp	3 P + E
570.90324	32 Amp	3 P + E
570.90325	32 Amp	3 P + N + E
570.9063	63 Amp	3 P + N + E
570.9125	125 Amp	3 P + N + E

International Industrial Standard IEC60309-CEE17

Firstflex has taken every precaution to ensure accurate information in this catalogue, but accept no liability for any errors or omissions. Firstflex reserves the right to modify specifications at any time.

Plug with Phase Inverters

Optima Series Reverse

Have you ever tried to plug in a three-phase tool and discovered that the motor rotates in the wrong direction? So, you then have to take the plug apart, remove the wires from the terminals, invert two phases, put everything back together again...

Or you can use a “phase inverter” plug from Scame’s OPTIMA Series which will immediately solve your problem with one simple move!



Plug - IP67 Version
Code: **218.3237RV**

Plugs - IP66/67

Code	Rating	Pins
218.1636RV	16 Amp	3 P + E
218.3236RV	32 Amp	3 P + E
218.1637RV	16 Amp	3 P + N + E
218.3237RV	32 Amp	3 P + N + E



Flush Mounting - IP67
Code: **248.1696RV**

Flush Mounting Appliance Inlets - IP66/67

Code	Rating	Pins
248.1696RV	16 Amp	3 P + E
248.3296RV	32 Amp	3 P + E
248.1697RV	16 Amp	3 P + N + E
248.3297RV	32 Amp	3 P + N + E

SCAME PHASE ROTATION CHANGER

16 Amp & 32 Amp Plugs & Inlets with built in reversing switch



The phases are inverted by simply pushing and turning the phase pin support with a screwdriver.



Interlocked Switch Socket Outlets



Interlocked Switch Socket Outlets

We have a comprehensive range of interlocked switch sockets with a mechanical interlocking system, high-performance isolator and modular option. From 16A to 125A offering a high quality product that is quick and easy to install and maintain.

Flush and Surface Mounting Modular System

Ideally suited to installation needs in premises that require industrial sockets but where protrusion from the wall must be kept to a minimum, such as in kitchens, bars, public places, shops and business premises in general.

Performances

- ▶ Range 500 - Interlocked switch IP44
- ▶ Range 505 - Interlocked switch IP67
- ▶ Range 568 - Interlocked switch, Internal DIN Rail to mount MCB or RCD, IP67
- ▶ Range 503 - Interlocked switch, GRP



16 & 32 Amp



16 & 32 Amp



63 Amp

IP44 OMNIA Series

Code	Rating	Pins	Earth Position
240v BLUE			
500.1683	16 Amp	2 P + E	6H
500.3283	32 Amp	2 P + E	6H
415v RED			
500.1686	16 Amp	3 P + E	6H
500.1687	16 Amp	3 P + N + E	6H <small>INDENT STOCK ITEM</small>
500.3286	32 Amp	3 P + E	6H

IP67 OMNIA Series

Code	Rating	Pins	Earth Position
240v BLUE			
505.1683	16 Amp	2 P + E	6H
505.3283	32 Amp	2 P + E	6H
415v RED			
505.1686	16 Amp	3 P + E	6H
505.1687	16 Amp	3 P + N + E	6H
505.3286	32 Amp	3 P + E	6H
505.32864	32 Amp	3 P + E	3H* (Reefer)
505.3287	32 Amp	3 P + N + E	6H
505.6386	63 Amp	3 P + E	6H
505.6387	63 Amp	3 P + N + E	6H

*3H = Refrigerated Container

Interlocked Switch Socket Outlets

Scame offers products suitable for installation into environments under potential risk of explosion. The Advance GRP series are made from glass reinforced polyester which guarantees excellent heat and fire resistance; it does not propagate flames, emit halogens or smoke.

IP67 - Advance Series

Code	Rating	Pins	Earth Position
415v RED			
568.3287	32 Amp	3 P + N + E	6H + MCB/RCD Mount
568.6386	63 Amp	3 P + E	6H + MCB/RCD Mount
568.6387	63 Amp	3 P + N + E	6H + MCB/RCD Mount



568 Series

125A Switched Interlocked Socket Outlet

The glass reinforced polyester combined with the thickness of the casing walls guarantee excellent mechanical resistance to impacts (IK10). Offering resistance to chemical agents and atmospheric agents making it suitable for most extreme environmental conditions. The double degree of protection IP66 guarantees seal against entry of solid objects or liquid, also outstanding resistance to UV radiation.

Technical Specifications	
Rated Current	125A
IP Rating	IP66
IK Rating	IK10
Rated Voltage	100÷690V
Operating Temperature	-25°C ~ 60°C
Self-extinguishing UL94	V0
Colour	RAL 7037 grey

IP66 - Advance (GRP) Series

415v RED				
503.12586	125 Amp	3 P + E	6H	
503.12587	125 Amp	3 P + N + E	6H	



503 Series

International Industrial Standard IEC60309-CEE17

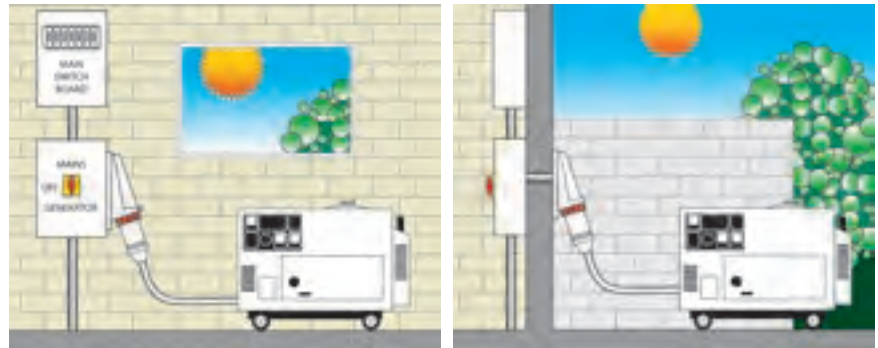
Emergency Changeover Switch



Safely switch over from mains power to your generator to maintain your power supply. Protection against power failure is important in costly and inconvenient situations, such as rural homes, factories, milking sheds, processing plants and food areas. Custom-built and available in 16, 32, 63 and 125 Amp capacities.

PRODUCT FEATURES:

- ▶ Safely connect the generator to the mains with a minimum of down time
- ▶ Ideal for rural homes, factories, dairy farms, processing plants and food areas
- ▶ Includes SCAME appliance inlet for quick connection to the generator
- ▶ Long life enclosure is either grey polyester IP65 or powdercoated steel with IP65 rated door sealing gasket and plastic surface mounted inlet
- ▶ Fitted with lockable door
- ▶ Custom-built solutions to suit any situation



Single Phase Changeover - IP65

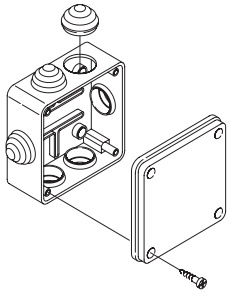
Code	Product	Description
161CHANOVER	Single phase C/O 16A inlet	16A, 230V, 3 pin appliance inlet, IP67 63A 3 pole changeover switch
321CHANOVER	Single phase C/O 32A inlet	32A, 230V, 3 pin appliance inlet, IP67 63A 3 pole changeover switch
631CHANOVER	Single phase C/O 63A inlet	63A, 230V, 3 pin appliance inlet, IP67 63A 3 pole changeover switch
Enclosure Size: 300mm x 250mm x 140mm (HxWxD)		

Three Phase Changeover - IP65

Code	Product	Description
323CHANOVER	Three phase C/O 32A inlet	32A, 400V, 5 pin appliance inlet, IP67 63A 4 pole changeover switch
633CHANOVER	Three phase C/O 63A inlet	63A, 400V, 5 pin appliance inlet, IP67 63A 4 pole changeover switch
Enclosure Size: 300mm x 250mm x 140mm (HxWxD)		
1253CHANOVER	Three phase C/O 125A inlet	125A, 400V, 5 pin appliance inlet, IP67 125A 4 pole changeover switch
Enclosure Size: 400mm x 400mm x 200mm (HxWxD)		

Firstflex has taken every precaution to ensure accurate information in this catalogue, but accept no liability for any errors or omissions. Firstflex reserves the right to modify specifications at any time.

Surface Mounting Junction Boxes



Technical Specifications

Made of self-extinguishing engineering plastic

Reference Standards IEC 60670-1

Colour RAL 7035 grey

Operating Temperature -25°C to +85°C

Full insulation to EN 60439-1



FLANGE ADAPTOR

654.0108

Adaptor plate for rectangular to square appliance inlets (small base) fits 32 Amp enclosure.



SCAME Straight Surface Box

570.0016 16 Amp

570.0032 32 Amp



SCABOX + SLV IP56

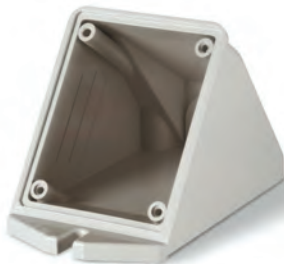
686.204 100 x 100 x 50mm

686.208 240 x 190 x 90mm

686.209 300 x 220 x 120mm

686.404 100 x 100 x 80mm

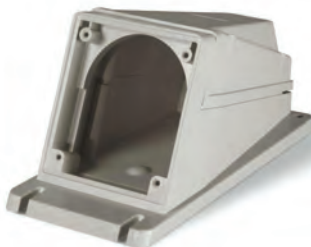
689.206 150 x 110 x 70mm



SCAME Angle Box

570.0116 16 Amp

570.0132 32 Amp



SCAME Surface Box

570.0163 63 Amp

570.0125 125 Amp

Firstflex has taken every precaution to ensure accurate information in this catalogue, but accept no liability for any errors or omissions. Firstflex reserves the right to modify specifications at any time.

Domino System Modular Enclosures IP66

All dimensions are:
H x W x D



Consumer Units

Units come with or without busbar. Use **W** to include busbar.

2 DIN Consumer Units

135 x 76 x 102mm

672.2002



4 DIN Consumer Units

190 x 112 x 106mm

672.2004

672.2004W



8 DIN Consumer Units

190 x 184 x 106mm

672.2008

672.2008W



12 DIN Consumer Units

250 x 256 x 140mm

672.2012

672.2012W



16 DIN Consumer Units

250 x 328 x 140mm

672.2016

672.2016W



24 DIN Consumer Units

400 x 256 x 140mm

672.4024

672.4024W



32 DIN Consumer Units

400 x 328 x 140mm

672.4032

672.4032W



48 DIN Consumer Units

550 x 328 x 140mm

672.5048



48 DIN

64 DIN

64 DIN Consumer Units

700 x 328 x 140mm

672.7064 Indent Stock Item

Enclosures with Plain Front Panel

8 DIN w/ Plain Front Panel

340 x 184 x 106mm

672.2100



16 DIN w/ Plain Front Panel

400 x 328 x 140mm

672.4116



16 DIN w/ Plain Front Panel

550 x 328 x 140mm

672.5116



Enclosures with IEC309 Series cut out

8 DIN w/ IEC309 Series cut out

340 x 184 x 106mm

Outlets: 10, 16 and 32 Amp

672.2300



12 DIN w/ IEC309 Series cut out

400 x 256 x 140mm

Outlets: 10, 16 and 32 Amp

672.3300



16 DIN w/ IEC309 Series cut out

400 x 328 x 140mm

Outlets: 10, 16 and 32 Amp

672.4316 Indent Stock Item



16 DIN w/ IEC309 Series cut out

Size: 550 x 328 x 140mm

Outlets: 10, 16 and 32 Amp

672.5616



SCAME PLUGS, CONNECTORS & ENCLOSURES

Hose proof rating makes them eminently suitable for food industry applications and for harsh environments.

Firstflex has taken every precaution to ensure accurate information in this catalogue, but accept no liability for any errors or omissions. Firstflex reserves the right to modify specifications at any time.

SCAME PLUGS, CONNECTORS & ENCLOSURES



Domino System Modular Enclosures IP66

Enclosures to suit
Omnia Series Cut Out

All dimensions are: H x W x D



Omnia Series Switches
505.3283

Enclosures

150 x 328 x 115mm
Outlets: Omnia Series
672.1200



14 DIN

480 x 285 x 153mm
Outlets: Omnia Series
572.0315



8 DIN

340 x 184 x 106mm
Outlets: Omnia Series
672.2200 Indent Stock Item



16 DIN

400 x 328 x 140mm
Outlets: Omnia Series
672.4216 Indent Stock Item



12 DIN

400 x 256 x 140mm
Outlets: Omnia Series
672.3200 Indent Stock Item



Switches & Accessories



Rectangular Bulkhead Light - IP55

- ▶ For incandescent lamps
- ▶ Mizar series
- ▶ Max 60W
- ▶ Lampholder E27 (screw bulb)

Code: 786.2761 Indent Stock Item



Technical Specifications

IP Rating	IP55
Operating Temperature	Polycarbonate diffuser: -15°C~35°C
Glow Wire Test	650°C
Material	Engineering Plastic
IK Rating	IK04~IK07
Double Insulation	Yes
Colour of Diffuser	Red

Data Communications Enclosure

- ▶ IP66 rated enclosure even with cables connected.
- ▶ Tinted polycarbonate cover to see inside.
- ▶ Polycarbonate enclosure - shockproof, chemical and UV resistant.
- ▶ Accepts PDL 600 series mechanisms including: RJ45, CAT5, CAT6 (with/ without POE) F-type TV, RCA, HDMI, BT Telephone.
- ▶ Ideal for external connections - phone, data cable, speakers, industrial access points and wash down areas.
- ▶ Flush wall mounting kit available (**Code: 137.121**)

Code: 137.COMM



Technical Specifications

	EN60670-1
IP Rating	IP66
Operating Temperature	-5°C to 60°C
Material	Polycarbonate
IK Rating	IK07
Cable Inserts	M20
Colour	BASE: RAL7035 grey/ LID: smoke tinted transparent



Blank Plate for Panel Cutouts
Code: 654.0100



Blank Plate for 4 Din Modules
Code: 654.0400



Blank Plate for Panel Cutouts
▶ IP55
Code: 654.0120



4 DIN Terminal
Code: 654.0365



8 DIN Terminal
Code: 654.0363



12 DIN Terminal
Code: 654.0361

Domestic Outlets

Watertight Cover

- ▶ 10A or 15A single outlet - IP55



Code	Rating	Pins
570.5052A-10	10 Amp	2P+E
570.5052A-15	15 Amp	2P+E

Waterproof Socket

- ▶ 15A - IP55
- ▶ Dimensions: 60mm x 60mm x 10mm



Code	Rating	Pins
YGB018	15 Amp / 240V	2P+E

Distribution Assemblies for Construction Sites

**ASK OUR
SALES TEAM**



SCAME PLUGS, CONNECTORS & ENCLOSURES

PLUGS, CONNECTORS & ENCLOSURES

Firstflex has taken every precaution to ensure accurate information in this catalogue, but accept no liability for any errors or omissions. Firstflex reserves the right to modify specifications at any time.