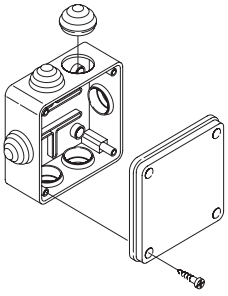


Surface Mounting Junction Boxes



Technical Specifications

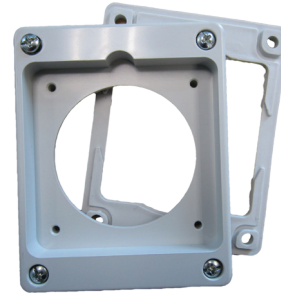
Made of self-extinguishing engineering plastic

Reference Standards IEC 60670-1

Colour RAL 7035 grey

Operating Temperature -25°C to +85°C

Full insulation to EN 60439-1



FLANGE ADAPTOR

654.0108

Adaptor plate for rectangular to square appliance inlets (small base) fits 32 Amp enclosure.



SCAME Straight Surface Box

570.0016 16 Amp

570.0032 32 Amp



SCABOX + SLV IP56

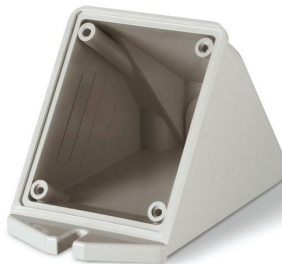
686.204 100 x 100 x 50mm

686.208 240 x 190 x 90mm

686.209 300 x 220 x 120mm

686.404 100 x 100 x 80mm

689.206 150 x 110 x 70mm



SCAME Angle Box

570.0116 16 Amp

570.0132 32 Amp



SCAME Surface Box

570.0163 63 Amp

570.0125 125 Amp

Firstflex has taken every precaution to ensure accurate information in this catalogue, but accept no liability for any errors or omissions. Firstflex reserves the right to modify specifications at any time.