

AMPHENOL PLUGS & CONNECTORS

CI46 SERIES

Heavy Duty Amphenol Multi-Pole Power Connectors ALUMINIUM 10P + E
1 Lever, 16 Amp 400V

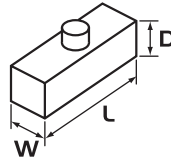
APPLICATIONS:

- Lighting & Entertainment** For multiple control connections on stages and movie sets.
- Medical Industry** Suitable for medical devices and test equipment with a threaded collar to prevent accidental uncoupling.
- Industrial Connectors** Suitable for use on industrial machines and controls, data processing and instrumentation.

PRODUCT FEATURES:

- ▶ Heavy duty alloy body & base
- ▶ One lever (steel) locking mechanism to avoid disconnection
- ▶ IP65 when mated / IP53 for spring loaded hoods.

Sizes in mm



CONSTRUCTION:

- Body & Base** Aluminium die cast alloy.
- Insert** Thermoplastic with wire protection & silver plated contacts
- 10 Pole + Earth** 16A 400V.
- Screw Terminal** 0.5 – 6.0mm².
- Lever** Single mild steel.

CHARACTERISTICS:

- Operating Temperature Range** -40°C to +125°C.
- Protection Class** IP65 when mated / IP53 for spring loaded hoods.
- Relevant Standards** DIN VDE 0110, IEC 60664, IEC 60529, UL-E63093, CSA-48932.



C146 10A 010 1021
Male Insert Screw Terminal
W 27 L 57 D 31



C146 10B 010 1021
Female Insert Screw Terminal
W 27 L 57 D 32



C146 VN16 160 0002
Trumpet Strain Relief, PG16 (Cable < 16.0mm)
C146 VN16 210 0002
Trumpet Strain Relief, PG21 (Cable < 21.0mm)
C146 VN16 290 0002
Trumpet Strain Relief, PG29 (Cable < 30.0mm)



C146 VN16 160 0014
Gland Bush C/W Seal, PG16 (Cable 8.0 – 16.0mm)
C146 VN16 210 0014
Gland Bush C/W Seal, PG21 (Cable 11.0 – 22.0mm)
C146 VN16 290 0014
Gland Bush C/W Seal, PG29 (Cable 19.0 – 31.0mm)



C146 10G 010 6061
Top Entry Hood, PG16, 2 Stud W 43 L 73 D 51



C146 10G 010 6071
Top Entry Hood, PG21, 2 Stud W 43 L 73 D 51



C146 10G 010 5061
Side Entry Hood, PG16, 2 Stud W 43 L 73 D 51



C146 10G 010 5068
Side Entry Hood, PG21, 2 Stud W 43 L 73 D 70



C146 10G 010 8048
Cable Mount Base, PG21, 1 Lever
W 43 L 91 D 70



C146 10F 010 0011
Surface Mount Base Open, 1 Lever
W 43 L 93 D 29



C146 10F 010 0031
Surface Mount Base Open, 1 Lever,
C/W Dust Cover
W 43 L 93 D 29



C146 10F 010 8061
Surface Mount Base Enclosed, 1 Lever,
1 x PG16 Side Entry, C/W Dust Cover
W 54 L 94 D 57

Other non C146 series accessories available:



GPG16SUP
Nylon Gland PG16 C/W Pigtail Support (Cable 6.0 – 14.0mm)



GPG21SUP
Nylon Gland PG21 C/W Pigtail Support (Cable 10.0 – 17.5mm)



GPG16 Nylon Gland PG16 (Cable 6.0 – 14.0mm)

GPG21 Nylon Gland PG21 (Cable 10.0 – 17.5mm)

GPG29 Nylon Gland PG29 (Cable 16.0 – 24.0mm)

Firstflex has taken every precaution to ensure accurate information in this catalogue, but accept no liability for any errors or omissions. Firstflex reserves the right to modify specifications at any time.