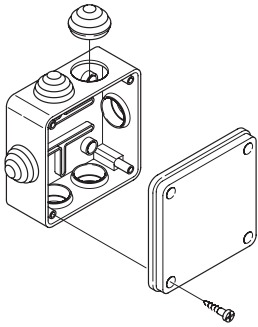


## Surface Mounting Junction Boxes



### Technical Specifications

Made of self-extinguishing engineering plastic

**Reference Standards** IEC 60670-1

**Colour** RAL 7035 grey

**Operating Temperature** -25°C to +85°C

**Full insulation to** EN 60439-1



### SCAME Straight Surface Box

**570.0016** 16 Amp

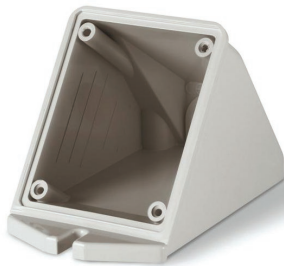
**570.0032** 32 Amp



### SCABOX + SLV IP44

**680.001** 65DIA x 35mm

**680.002** 80DIA x 40mm



### SCAME Angle Box

**570.0116** 16 Amp

**570.0132** 32 Amp



### SCABOX + SLV IP44

**680.003** 80 x 80 x 40mm



### SCAME Surface Box

**570.0163** 63 Amp

**570.0125** 125 Amp



### SCABOX + SLV IP56

**686.204** 100 x 100 x 50mm

**686.208** 240 x 190 x 90mm

**686.209** 300 x 220 x 120mm

**686.404** 100 x 100 x 80mm

**689.206** 150 x 110 x 70mm

Firstflex has taken every precaution to ensure accurate information in this catalogue, but accept no liability for any errors or omissions. Firstflex reserves the right to modify specifications at any time.