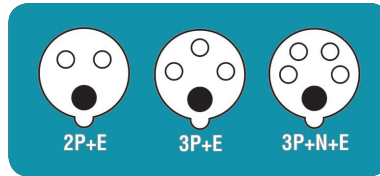


## SCAME Socket Outlets



Socket Front View



### IP67 Socket Outlet

Code	Rating	Pins	Earth Position
<b>110v YELLOW</b>			
<b>418.1660</b>	16 Amp	2 P + E	4H
<b>240v BLUE</b>			
<b>418.1663</b>	16 Amp	2 P + E	6H
<b>418.3263</b>	32 Amp	2 P + E	6H
<b>418.6363</b>	63 Amp	2 P + E	6H
<b>415v RED</b>			
<b>418.1666</b>	16 Amp	3 P + E	6H
<b>418.1667</b>	16 Amp	3 P + N + E	6H
<b>418.3266</b>	32 Amp	3 P + E	6H
<b>418.32664</b>	32 Amp	3 P + E	3H* (Reefer)
<b>427.3267</b>	32 Amp	3 P + N + E	6H Reduced Base
<b>418.3267</b>	32 Amp	3 P + N + E	6H
<b>418.6367</b>	63 Amp	3 P + N + E	6H
<b>418.12566</b>	125 Amp	3 P + E	6H
<b>418.12567</b>	125 Amp	3 P + N + E	6H

\* 3H = Refrigerated Container

Fittings 63 Amp and above have Pilot Pin and are IP67 Rated

### IP44 Socket Outlet

Code	Rating	Pins	Earth Position
<b>240v BLUE</b>			
<b>413.1663</b>	16 Amp	2 P + E	6H
<b>422.1663</b>	16 Amp	2 P + E	6H Reduced Base
<b>413.3263</b>	32 Amp	2 P + E	6H

International Industrial Standard IEC60309-CEE17

### Surface Mounting Junction Boxes

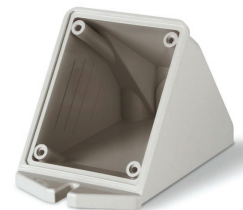
#### SCAME Straight Surface Box

<b>570.0016</b>	16 Amp
<b>570.0032</b>	32 Amp



#### SCAME Angle Box

<b>570.0116</b>	16 Amp
<b>570.0132</b>	32 Amp



#### SCAME Surface Box

<b>570.0163</b>	63 Amp
<b>570.0125</b>	125 Amp

