

## SCAME Appliance Inlets



### IP67 Surface Mounting Appliance Inlets

Code	Rating	Pins	Earth Position
<b>240v BLUE</b>			
<b>247.1693</b>	16 Amp	2 P + E	6H
<b>247.3293</b>	32 Amp	2 P + E	6H
<b>248.6393</b>	63 Amp	2 P + E	6H Panel Mounting
<b>248.12593</b>	125 Amp	2 P + E	6H Panel Mounting
<b>415v RED</b>			
<b>247.1696</b>	16 Amp	3 P + E	6H
<b>247.1697</b>	16 Amp	3 P + N + E	6H
<b>247.3296</b>	32 Amp	3 P + E	6H
<b>247.3297</b>	32 Amp	3 P + N + E	6H
<b>248.6396</b>	63 Amp	3 P + E	6H Panel Mounting
<b>248.6397</b>	63 Amp	3 P + N + E	6H Panel Mounting
<b>248.12596</b>	125 Amp	3 P + E	6H Panel Mounting
<b>248.12597</b>	125 Amp	3 P + N + E	6H Panel Mounting
<b>570.0132</b>	32 Amp	Mounting Box	Angle
<b>570.0163</b>	63 Amp	Mounting Box	Angle
<b>570.0125</b>	125 Amp	Mounting Box	Angle

Fittings 63 Amp and above have Pilot Pin

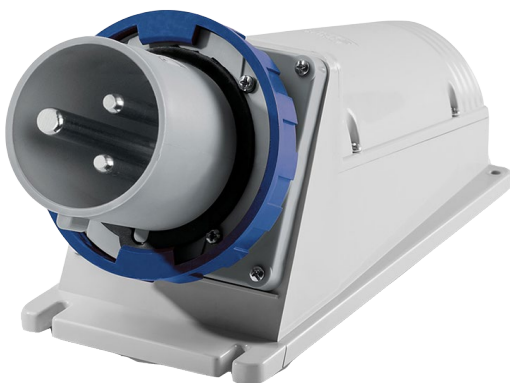
### Flush Mounting Appliance Inlets

Code	Rating	Pins	Earth Position
<b>240v BLUE</b>			
<b>248.1693</b>	16 Amp	2 P + E	6H (with cap)
<b>248.3293</b>	32 Amp	2 P + E	6H
<b>415v RED</b>			
<b>248.1696RV</b>	16 Amp	3 P + E	6H
<b>248.3296RV</b>	32 Amp	3 P + E	6H
<b>248.1697RV</b>	16 Amp	3 P + N + E	6H
<b>248.3297RV</b>	32 Amp	3 P + N + E	6H

See over the page for more Technical information



### Panel Mounting Inlets require a Mounting Box



### Cap for IP67 Inlets

Code	Rating	Pins
<b>570.90164</b>	16 Amp	3 P + E
<b>570.90324</b>	32 Amp	3 P + E
<b>570.90325</b>	32 Amp	3 P + N + E
<b>570.9063</b>	63 Amp	3 P + N + E
<b>570.9125</b>	125 Amp	3 P + N + E

International Industrial Standard IEC60309-CEE17

Firstflex has taken every precaution to ensure accurate information in this catalogue, but accept no liability for any errors or omissions. Firstflex reserves the right to modify specifications at any time.