

C146 SERIES

**Heavy Duty Amphenol Multi-Pole Power Connectors THERMOPLASTIC 3P + E
1 Lever, 10 Amp 400V**

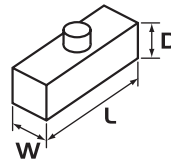
APPLICATIONS:

- Lighting & Entertainment** For multiple control connections on stages and movie sets.
- Medical Industry** Suitable for medical devices and test equipment with a threaded collar to prevent accidental uncoupling.
- Industrial Connectors** Suitable for use on industrial machines and controls, data processing and instrumentation.

PRODUCT FEATURES:

- ▶ Heavy duty thermoplastic body & base
- ▶ One lever (steel) locking mechanism to avoid disconnection
- ▶ IP65 when mated / IP53 for spring loaded hoods.

Sizes in mm



CONSTRUCTION:

- Body & Base** Thermoplastic.
- Insert** Thermoplastic with silver plated contacts 3 Pole + Earth 10A 400V.
- Screw Terminal** 0.25 – 2.5mm².
- Lever** Single mild steel.

CHARACTERISTICS:

- Operating Temperature Range** -40°C to +100°C.
- Protection Class** IP65 when mated / IP53 for spring loaded hoods.
- Relevant Standards** DIN VDE 0110, IEC60664, IEC 60529, UL-E63093, CSA-48932.



C146 10A 003 0024
Male Insert Screw Terminal
W 21 L 21 D 39



C146 10B 003 0024
Female Insert Screw Terminal
W 21 L 21 D 39



C146 VN16 110 0004
Trumpet Strain Relief, PG11
Cable < 10.5mm



C146 VN16 110 0014
Gland Bush C/W Seal PG11,
Plastic
Cable 7.0 – 12.5mm



C146 10G 003 6004
Top Entry Hood PG11,
2 Stud, Plastic
W 27 L 34 D 50



C146 10G 003 8044
Cable Mount Base PG11,
1 Lever, Plastic
W 27 L 37 D 50



C146 10F 003 0004
Surface Mount Base Straight
Open 1 Lever, Plastic
W 28 L 40 D 22



C146 10F 003 0044
Surface Mount Base Angled,
Open 1 Lever, Plastic
W 41 L 40 D 26

Other non C146 series accessories available:



GPG11SUP
Nylon Gland PG11 C/W Pigtail Support
(Cable 4.0 – 10.0mm)



GPG11
Nylon Gland PG11
(Cable 4.0 – 10.0mm)

Firstflex has taken every precaution to ensure accurate information in this catalogue, but accept no liability for any errors or omissions. Firstflex reserves the right to modify specifications at any time.