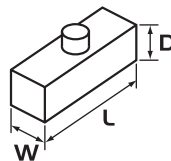


# AMPHENOL PLUGS & CONNECTORS

## CI46 SERIES

Heavy Duty Amphenol Multi-Pole Power Connectors ALUMINIUM 6P + E  
1 Lever, 42 Amp 400V

Sizes in mm



### APPLICATIONS:

**Lighting & Entertainment** For multiple control connections on stages and movie sets.

**Medical Industry** Suitable for medical devices and test equipment with a threaded collar to prevent accidental uncoupling.

**Industrial Connectors** Suitable for use on industrial machines and controls, data processing and instrumentation.

### PRODUCT FEATURES:

- ▶ Heavy duty alloy body & base
- ▶ One lever (steel) locking mechanism to avoid disconnection
- ▶ IP65 when mated / IP53 for spring loaded hoods

### CONSTRUCTION:

**Body & Base** Aluminium die cast alloy.

**Insert** Thermoplastic with wire protection & silver plated contacts  
6 Pole + Earth 42A 400V.

**Screw Terminal** 0.5 – 6.0mm<sup>2</sup>.

**Lever** Single mild steel.

### CHARACTERISTICS:

**Operating Temperature Range** -40°C to +125°C.

**Protection Class** IP65 when mated / IP53 for spring loaded hoods.

**Relevant Standards** DIN VDE 0110, IEC 60664, IEC 60529, UL-E63093, CSA-48932.



#### C146 10A 006 1025

Male Insert Screw Terminal  
W 34 L 85 D 34



#### C146 10B 006 1025

Female Insert Screw Terminal  
W 34 L 85 D 34



#### C146 VN16 210 0002

Trumpet Strain Relief, PG21 (Cable < 21.0mm)

#### C146 VN16 290 0002

Trumpet Strain Relief, PG29 (Cable < 30.0mm)



#### C146 VN16 210 0014

Gland Bush C/W Seal, PG21 (Cable 11.0 – 22.0mm)

#### C146 VN16 290 0014

Gland Bush C/W Seal, PG29 (Cable 19.0 – 31.0mm)



#### C146 10G 016 6061

Top Entry Hood, PG21, 2 Stud W 43 L 94 D 62

#### C146 10G 016 6071

Top Entry Hood, PG29, 2 Stud W 43 L 94 D 62



#### C146 10G 016 5061

Side Entry Hood, PG21, 2 Stud  
W 43 L 94 D 62



#### C146 10G 016 8041

Cable Mount Base, PG21, 1 Lever  
W 43 L 94 D 62



#### C146 10F 016 0011

Cable Mount Base Open, 1 Lever  
W 43 L 113 D 29



#### C146 10F 016 0031

Surface Mount Base Open, 1 Lever  
C/W Dust Cover  
W 43 L 113 D 29



#### C146 10F 016 8061

Surface Mount Base Enclosed, 1 Lever,  
1 x PG21 Side Entry, C/W Dust Cover  
W 57 L 117 D 64

Other non C146 series accessories available:



#### GPG21SUP

Nylon Gland PG21 C/W Pigtail Support  
(Cable 10.0 – 17.5mm)



#### GPG21

Nylon Gland PG21 (Cable 10.0 – 17.5mm)

#### GPG29

Nylon Gland PG29 (Cable 16.0 – 24.0mm)

Firstflex has taken every precaution to ensure accurate information in this catalogue, but accept no liability for any errors or omissions. Firstflex reserves the right to modify specifications at any time.