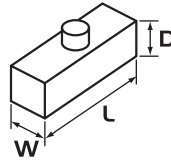


AMPHENOL PLUGS & CONNECTORS

C146 SERIES

Heavy Duty Amphenol Multi-Pole Power Connectors ALUMINIUM 3P + E
1 Lever, 10 Amp 400V

Sizes in mm



APPLICATIONS:

Lighting & Entertainment For multiple control connections on stages and movie sets.

Medical Industry Suitable for medical devices and test equipment with a threaded collar to prevent accidental uncoupling.

Industrial Connectors Suitable for use on industrial machines and controls, data processing and instrumentation.

PRODUCT FEATURES:

- ▶ Heavy duty alloy body & base
- ▶ One lever (steel) locking mechanism to avoid disconnection
- ▶ IP65 when mated / IP53 for spring loaded hoods

CONSTRUCTION:

Body & Base Aluminium die cast alloy.

Insert Thermoplastic with silver plated contacts 3 Pole + Earth 10A 400V.

Screw Terminal 0.25 – 2.5mm².

Lever Single mild steel.

CHARACTERISTICS:

Operating Temperature Range -40°C to +100°C.

Protection Class IP65 when mated / IP53 for spring loaded hoods.

Relevant Standards DIN VDE 0110, IEC 60664, IEC 60529, UL-E63093, CSA-48932.



C146 10A 003 0024
 Male Insert Screw Terminal
W 21 L 21 D 39



C146 10B 003 0024
 Female Insert Screw Terminal
W 21 L 21 D 39



C146 VN16 110 0004
 Trumpet Strain Relief, PG11
 Cable < 10.5mm



C146 VN16 110 0014
 Gland Bush C/W Seal PG11,
 Plastic
 Cable 7.0 – 12.5mm



C146 30G 003 6004
 Top Entry Hood PG11,
 2 Stud, Metal
W 27 L 34 D 50



C146 30G 003 8044
 Cable Mount Base PG11,
 1 Lever, Metal
W 27 L 37 D 50



C146 30F 003 0004
 Surface Mount Base Straight
 Open 1 Lever, Metal
W 28 L 40 D 22

Other non C146 series accessories available:



GPG11SUP
 Nylon Gland PG11 C/W Pigtail Support
 (Cable 4.0 – 10.0mm)



GPG11
 Nylon Gland PG11
 (Cable 4.0 – 10.0mm)

Firstflex has taken every precaution to ensure accurate information in this catalogue, but accept no liability for any errors or omissions. Firstflex reserves the right to modify specifications at any time.