

C146 SERIES

Heavy Duty Amphenol Multi-Pole Power Connectors ALUMINIUM 24P + E
2 Lever, 16 Amp 400V

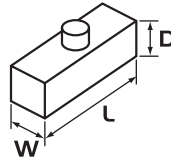
APPLICATIONS:

- Lighting & Entertainment** For multiple control connections on stages and movie sets.
- Medical Industry** Suitable for medical devices and test equipment with a threaded collar to prevent accidental uncoupling.
- Industrial Connectors** Suitable for use on industrial machines and controls, data processing and instrumentation.

PRODUCT FEATURES:

- ▶ Heavy duty alloy body & base
- ▶ Two lever (steel) locking mechanism to avoid disconnection
- ▶ IP65 when mated / IP53 for spring loaded hoods

Sizes in mm

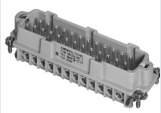


CONSTRUCTION:

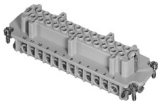
- Body & Base** Aluminium die cast alloy.
- Insert** Thermoplastic with wire protection & silver plated contacts 24 Pole + Earth 16A 400V.
- Screw Terminal** 0.5 – 6.0mm².
- Lever** Double mild steel.

CHARACTERISTICS:

- Operating Temperature Range** -40°C to +125°C.
- Protection Class** IP65 when mated / IP53 for spring loaded hoods.
- Relevant Standards** DIN VDE 0110, IEC 60664, IEC 60529, UL-E63093, CSA-48932.



C146 10A 024 1021
 Male Insert Screw Terminal
W 27 L 104 D 31



C146 10B 024 1021
 Female Insert Screw Terminal
W 27 L 104 D 32



C146 VN16 210 0002
 Trumpet Strain Relief, PG21 (Cable < 21.0mm)
C146 VN16 290 0002
 Trumpet Strain Relief, PG29 (Cable < 30.0mm)



C146 VN16 210 0014
 Gland Bush C/W Seal, PG21 (Cable 11.0 – 22.0mm)
C146 VN16 290 0014
 Gland Bush C/W Seal, PG29 (Cable 19.0 – 31.0mm)



C146 10Z 024 1001
 Protective Cover, 4 Stud
W 44 L 123 D 20



C146 10G 024 6001
 Top Entry Hood, PG21, 4 Stud **W 43 L 120 D 62**
C146 10G 024 6011
 Top Entry Hood, PG29, 4 Stud **W 43 L 120 D 62**



C146 10G 024 5011
 Side Entry Hood, PG29, 4 Stud
W 43 L 120 D 62



C146 10G 024 8028
 Cable Mount Base, PG21, 2 Lever
W 43 L 94 D 62



C146 10F 024 0001
 Surface Mount Base, Open, 2 Lever
W 43 L 140 D 29



C146 10F 024 5001
 Surface Mount Base, Enclosed, 2 Lever,
 1 x PG21, Side Entry
W 57 L 144 D 64

Other non C146 series accessories available:



GPG21SUP
 Nylon Gland PG21 C/W Pigtail Support
 (Cable 10.0 – 17.5mm)



GPG21
 Nylon Gland PG21 (Cable 10.0 – 17.5mm)

GPG29
 Nylon Gland PG29 (Cable 16.0 – 24.0mm)

Firstflex has taken every precaution to ensure accurate information in this catalogue, but accept no liability for any errors or omissions. Firstflex reserves the right to modify specifications at any time.