

# AMPHENOL PLUGS & CONNECTORS

## C146 SERIES

Heavy Duty Amphenol Multi-Pole Power Connectors ALUMINIUM 16P + E  
1 Lever, 16 Amp 400V

### APPLICATIONS:

**Lighting & Entertainment** For multiple control connections on stages and movie sets.

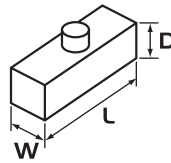
**Medical Industry** Suitable for medical devices and test equipment with a threaded collar to prevent accidental uncoupling.

**Industrial Connectors** Suitable for use on industrial machines and controls, data processing and instrumentation.

### PRODUCT FEATURES:

- ▶ Heavy duty alloy body & base
- ▶ One lever (steel) locking mechanism to avoid disconnection
- ▶ IP65 when mated / IP53 for spring loaded hoods

Sizes in mm



### CONSTRUCTION:

**Body & Base** Aluminium die cast alloy.

**Insert** Thermoplastic with wire protection & silver plated contacts  
16 Pole + Earth 16A 400V.

**Screw Terminal** 0.5 – 6.0mm<sup>2</sup>.

**Lever** Single mild steel.

### CHARACTERISTICS:

**Operating Temperature Range** -40°C to +125°C.

**Protection Class** IP65 when mated / IP53 for spring loaded hoods.

**Relevant Standards** DIN VDE 0110, IEC 60664, IEC 60529, UL-E63093, CSA-48932.



**C146 10A 016 1021**

Male Insert Screw Terminal  
W 27 L 78 D 31



**C146 10G 016 6061**

Top Entry Hood, PG21, 2 Stud  
W 43 L 94 D 62



**C146 10B 016 1021**

Female Insert Screw Terminal  
W 27 L 78 D 31



**C146 10G 016 5061**

Side Entry Hood, PG21, 2 Stud  
W 43 L 94 D 62



**C146 VN16 210 0002**

Trumpet Strain Relief, PG21 (Cable < 21.0mm)



**C146 10G 016 8041**

Cable Mount Base, PG21, 1 Lever  
W 43 L 94 D 62



**C146 VN16 210 0014**

Gland Bush C/W Seal, PG21 (Cable 11.0 – 22.0mm)



**C146 10F 016 0011**

Surface Mount Base, Open, 1 Lever  
W 43 L 113 D 29



**C146 10F 016 0031**

Surface Mount Base, Open, 1 Lever,  
C/W Dust Cover  
W 43 L 113 D 29



**C146 10F 016 8061**

Surface Mount Base, Enclosed, 1 Lever,  
1 x PG21 Side Entry, C/W Dust Cover  
W 57 L 117 D 64

Other non C146 series accessories available:



**GPG21SUP**

Nylon Gland PG21 C/W Pigtail Support  
(Cable 10.0 – 17.5mm)



**GPG21**

Nylon Gland PG21  
(Cable 10.0 – 17.5mm)

Firstflex has taken every precaution to ensure accurate information in this catalogue, but accept no liability for any errors or omissions. Firstflex reserves the right to modify specifications at any time.