

CI46 SERIES

Heavy Duty Amphenol Multi-Pole Power Connectors ALUMINIUM 10P + E
2 Lever, 16 Amp 400V

APPLICATIONS:

- Lighting & Entertainment** For multiple control connections on stages and movie sets.
- Medical Industry** Suitable for medical devices and test equipment with a threaded collar to prevent accidental uncoupling.
- Industrial Connectors** Suitable for use on industrial machines and controls, data processing and instrumentation.

PRODUCT FEATURES:

- ▶ Heavy duty alloy body & base
- ▶ Two lever (steel) locking mechanism to avoid disconnection
- ▶ IP65 when mated / IP53 for spring loaded hoods



C146 10A 010 1021
 Male Insert Screw Terminal
W 27 L 57 D 31



C146 10B 010 1021
 Female Insert Screw Terminal
W 27 L 57 D 32



C146 VN16 160 0002
 Trumpet Strain Relief, PG16 (Cable < 16.0mm)
C146 VN16 210 0002
 Trumpet Strain Relief, PG21 (Cable < 21.0mm)
C146 VN16 290 0002
 Trumpet Strain Relief, PG29 (Cable < 30.0mm)

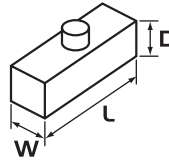


C146 VN16 160 0014
 Gland Bush C/W Seal, PG16 (Cable 8.0 – 16.0mm)
C146 VN16 210 0014
 Gland Bush C/W Seal, PG21 (Cable 11.0 – 22.0mm)
C146 VN16 290 0014
 Gland Bush C/W Seal, PG29 (Cable 19.0 – 31.0mm)



C146 10Z 010 1001
 Protective Cover, 4 Stud
W 44 L 76 D 20

Sizes in mm



CONSTRUCTION:

- Body & Base** Aluminium die cast alloy.
- Insert** Thermoplastic with wire protection & silver plated contacts
- 10 Pole + Earth** 16A 400V.
- Screw Terminal** 0.5 – 6.0mm².
- Lever** Double mild steel.

CHARACTERISTICS:

- Operating Temperature Range** -40°C to +125°C.
- Protection Class** IP65 when mated / IP53 for spring loaded hoods.
- Relevant Standards** DIN VDE 0110, IEC 60664, IEC 60529, UL-E63093, CSA-48932.



C146 10G 010 6001
 Top Entry Hood, PG16, 4 Stud **W 43 L 73 D 51**

C146 10G 010 6011
 Top Entry Hood, PG21, 4 Stud **W 43 L 73 D 51**

C146 10G 010 6018
 Top Entry Hood, PG29, 4 Stud **W 43 L 73 D 70**



C146 10G 010 5001
 Side Entry Hood, PG16, 4 Stud **W 43 L 73 D 51**

C146 10G 010 5011
 Side Entry Hood, PG21, 4 Stud **W 43 L 73 D 70**



C146 10G 010 8021
 Cable Mount Base, PG16, 2 Lever **W 43 L 73 D 51**

C146 10G 010 8028
 Cable Mount Base, PG21, 2 Lever **W 43 L 73 D 70**



C146 10G 010 6021
 Cable Mount Base, PG16, 2 Lever
W 43 L 73 D 51



C146 10F 010 0001
 Surface Mount Base Open, 2 Lever
W 43 L 93 D 29



C146 10F 010 0021
 Surface Mount Base Open, 4 Stud Only,
 C/W Dust Cover (Suit C146 10G 010 6021)
W 43 L 93 D 29



C146 10F 010 5001
 Surface Mount Base Enclosed, 2 Lever,
 1 x PG16 Side Entry
W 54 L 94 D 57

Other non C146 series accessories available:



GPG16SUP
 Nylon Gland PG16 C/W Pigtail Support (Cable 6.0 – 14.0mm)

GPG21SUP
 Nylon Gland PG21 C/W Pigtail Support (Cable 10.0 – 17.5mm)



GPG16 Nylon Gland PG16 (Cable 6.0 – 14.0mm)

GPG21 Nylon Gland PG21 (Cable 10.0 – 17.5mm)

GPG29 Nylon Gland PG29 (Cable 16.0 – 24.0mm)

Firstflex has taken every precaution to ensure accurate information in this catalogue, but accept no liability for any errors or omissions. Firstflex reserves the right to modify specifications at any time.